



e-ISSN: 2278-8875  
p-ISSN: 2320-3765

# International Journal of Advanced Research

in Electrical, Electronics and Instrumentation Engineering

Volume 14, Issue 5, May 2025

**ISSN** INTERNATIONAL  
STANDARD  
SERIAL  
NUMBER  
INDIA

**Impact Factor: 8.807**

☎ 9940 572 462

☎ 6381 907 438

✉ [ijareeie@gmail.com](mailto:ijareeie@gmail.com)

@ [www.ijareeie.com](http://www.ijareeie.com)



# Quantum Computing-Based Integration of Modulo $2^n+1$ Adder for Edge Detection

N. Jayanthi

Assistant professor, Department of ECE., Mahendra Engineering College., Namakkal, India

A. Anthony Irudhaya Aakash, C. Arulkumar, S. Dineshkumar, G. Inbakumar

UG Student, Department of ECE., Mahendra Engineering College, Namakkal, India

**ABSTRACT:** The rapid advancements in quantum computing have paved the way for optimizing complex computational tasks, including image processing and edge detection. Traditional edge detection algorithms, such as Sobel and Canny, often face high computational demands, limiting their efficiency in real-time and resource-constrained environments. This study explores the integration of Modulo  $2^N+1$  Adders within a quantum computing framework to enhance the efficiency of edge detection. By leveraging the principles of quantum parallelism and superposition, the proposed approach utilizes key quantum gates, including the Controlled-NOT (CNOT) and Toffoli gates, to efficiently implement modulo arithmetic operations. These quantum gates play a crucial role in reducing the computational complexity of arithmetic operations involved in edge detection, leading to improvements in both speed and accuracy. The integration of quantum computing techniques with Modulo  $2^N+1$  Adders presents a promising solution for applications in computer vision, medical imaging, and real-time video processing. The results indicate that quantum-based edge detection methods can outperform classical techniques, offering a scalable and efficient alternative for advanced image processing tasks.

**KEYWORDS:** Quantum Computing, Edge Detection, Modulo  $2^N+1$  Adders, CNOT Gate, Toffoli Gate, Image Processing.

## I. INTRODUCTION

Overview of quantum computing potential to solve complex problems using qubits, superposition, and entanglement. The importance of edge detection in image processing and the challenges of traditional methods like Sobel and Canny. Explanation of Modulo  $2^N+1$  Adders and their role in reducing computational complexity for image processing tasks. How these adders optimize modulo arithmetic operations for edge detection. The use of CNOT and Toffoli gates in quantum circuits for performing efficient arithmetic operations. Their role in enhancing the speed and accuracy of edge detection within quantum computing. Advantages of quantum-based edge detection over classical methods in terms of computational speed, accuracy, and efficiency. Potential applications in real-time image processing, computer vision, and medical imaging. In the world of battery-based and portable devices, the residue number system (RNS) can play a significant role due to its low-power features and competitive delay. The RNS can provide carry-free and fully parallel arithmetic operations for several applications, including digital signal processing and cryptography. However, its real usage requires forward and reverse converters to be integrated in the existing digital systems. The reverse conversion, i.e., residue to binary conversion, is a hard and time-consuming operation. Hence, the problem of designing high-performance reverse converters has motivated continuous research using two main approaches to improve the performance of the converters: 1) investigate new algorithms and novel arithmetic formulations to achieve simplified conversion formulas and 2) introduce new moduli sets, which can lead to more simple formulations. Thereafter, given the final simplified conversion equations, they are computed using well-known adder architectures, such as carry-save adders (CSAs) and ripple-carry architectures, to implement carry-propagate adders (CPAs) and, more seldomly, fast and expensive adders such as the ones with carry-look ahead or parallel-prefix architectures. In this brief, for the first time, we present a comprehensive methodology to wisely employ parallel-prefix adders in carefully selected positions in order to design fast reverse converters. The collected experimental results based on area, delay, and power consumption show that, as expected, the usage of the parallel-prefix adders to implement converters highly increases the speed at the expense of additional area and remarkable increase of power consumption. The significant growing of power consumption makes the reverse converter not competitive. Two power-efficient and low-area hybrid parallel-prefix adders are presented in this brief to tackle with these performance limitations, leading to significant reduction of the power delay product (PDP) metric and considerable improvements in the area-time<sup>2</sup> product (AT<sup>2</sup>) in comparison with the original converters without using parallel-prefix adders.



The forward converter, modulo arithmetic units, and reverse converter are the main parts of the RNS. In contrast to other parts, reverse converter consists of a complex and nonmodular structure. Therefore, more attention should be directed to its design to prevent slow operation and compromise the benefits of the RNS. Both the characteristics of the moduli set and conversion algorithm have significant effects on the reverse converter performance. Hence, distinct moduli sets have been introduced. In addition to the moduli set, hardware components selection is key to the RNS performance. For instance, parallel-prefix adders are known as unsuitable structures for complex reverse converters because of their high power consumption. However, parallel-prefix adders with its high-speed feature have been used in the RNS modular arithmetic channels. This performance gain is due to parallel carry computation structures, which is based on different algorithms. Each of these structures has distinct characteristics, such as Sklansky (SK), and Kogge–Stone (KS) have the maximum and minimum fan-out, respectively, both providing minimal logic depth. Minimum fan-out comes at the expense of more circuit area. Therefore, hardware components selection should be undertaken carefully.

The Chinese remainder theorem, or other related improved approaches and techniques underlie the RNS reverse conversion, whose formulation can be directly mapped to ripple-carry adders (RCA). However, this leads to significant speed degradation, due to the linear increase of the delay in the RCA with the number of bits. Parallel-prefix adders can be used in the RNS reverse converters to bind the delay to logarithmic growth. However, in reverse converters, several parallel-prefix adders are usually required. Even when only one adder is used, the bit length of this adder is quite large. Consequently, this results in high power consumption notwithstanding its high speed. Therefore, in this section, two approaches that take advantage of the delay properties of the parallel prefix adders with competitive power consumption are introduced. Usually, one regular binary addition is required in reverse converter structures to achieve the final binary representation. This final addition has an important effect in the total delay of the converter due to the large bit-length of the operands. A thorough assessment of this final regular addition in recent converter designs shows that one of the operands has some constant bits with value 1 as highlighted by the following lemma, which applies to a class of converters.

Although over the next years, the primary objective of manufacturing test will remain essentially the same—to ensure reliable and high quality semiconductor products conditions and consequently also test solutions may undergo a significant evolution. The semiconductor technology, design characteristics, and the design process are among the key factors that will impact this evolution.

## II. LITERATURE SURVEY

**Kim et al.** proposed a quantum modular adder over  $GF(2n - 1)$  that avoids saving the final carry, offering a new design that reduces both quantum circuit depth and gate count. Their approach, grounded in Ripple Carry Addition (RCA), is tailored for quantum environments where storing intermediate values is expensive. This efficient quantum modular adder significantly improves performance in quantum computing systems requiring finite field arithmetic. The authors highlight applications in cryptography and demonstrate through simulation that the design requires fewer qubits and lower gate complexity than previous models, making it highly suitable for quantum image processing and edge detection systems.

**Kusyk et al.** conducted a comprehensive survey on quantum circuit compilation (QCC) techniques for Noisy Intermediate-Scale Quantum (NISQ) systems. They explored the challenges in mapping quantum algorithms onto real hardware while adhering to constraints like decoherence, limited connectivity, and gate errors. Their analysis emphasizes how inefficient QCC leads to increased error rates and latency, making AI and heuristic-based strategies essential for circuit optimization. This paper is particularly relevant to systems like quantum edge detectors, where optimized mapping of quantum arithmetic onto NISQ platforms is necessary to ensure reliability and performance in practical deployments.

**Wang et al.** presented a thorough analysis of quantum arithmetic circuits, focusing on their role as the foundation for efficient quantum algorithms. They categorized arithmetic operations into Clifford+T and Quantum Fourier Transform (QFT)-based designs, comparing their gate-level performance. The study emphasized metrics such as Toffoli depth, gate count, and qubit usage, which are critical for efficient circuit construction. Their insights are valuable for optimizing arithmetic-heavy processes like modular addition in edge detection systems, especially when balancing gate complexity and performance on fault-tolerant quantum hardware. Their work helps guide future design choices for scalable quantum arithmetic components.

**Gomathi et al.** explored the design of ripple carry adders using Quantum-Dot Cellular Automata (QCA), a technology offering low power, high-speed digital logic design. The study emphasized the simplicity and compact nature of QCA-based full adders and their layout using majority gates. Their work showed that ripple carry adders in QCA are viable for



building modular arithmetic circuits due to their minimal design and low area footprint. While QCA is a classical nanotechnology, its efficient carry propagation logic is analogous to quantum adders, supporting the design motivation behind using carry-efficient quantum adders in edge detection architectures.

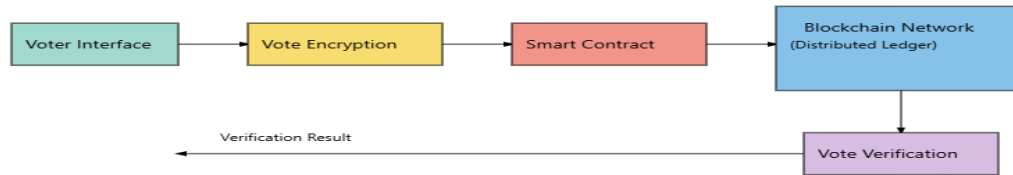
**Joshi et al.** proposed an optimization method for quantum arithmetic circuits using ZX-calculus, a graphical technique for reducing T-gate counts and ancilla requirements. Their work specifically optimized fault-tolerant multiplier circuits and demonstrated significant reduction in resources, making their approach highly applicable in designing scalable and resource-efficient quantum circuits. This technique is beneficial for quantum edge detection systems that rely on multiple arithmetic operations, as it helps maintain low qubit usage and circuit depth. The application of ZX-calculus in optimizing arithmetic logic aligns well with the needs of quantum image processing systems requiring precision and efficiency are shown in table 1.

Table 1: Summary of Related Work on Blockchain-Based Privacy-Centric Voting Systems

Author(s)	Title / System	Technology Used	Focus Area	Key Contribution
J. Benaloh et al.	End-to-End Verifiable Voting Systems	Homomorphic Encryption, Audit Trails	Verifiability & Voter Privacy	Introduced verifiable systems that protect ballot secrecy.
A. Kiayias et al.	Blockchain-Based E-Voting Protocols	Permissioned Blockchain	Trustless, Tamper-Proof Elections	Designed secure, distributed voting using cryptographic proofs.
S. Noizat	BitVote	Bitcoin Blockchain	Public Ledger Voting	Early attempt to integrate voting into the Bitcoin network.
M. McCorry et al.	Smart Contracts for Boardroom Voting	Ethereum Smart Contracts	Stakeholder Voting in Organizations	Proposed gas-efficient and secure smart contract voting.
Hardwick et al.	E-Voting with Blockchain	Blockchain, Zero-Knowledge Proofs	Decentralization and Privacy	Discussed hybrid models for secure e-voting on blockchain.
K. Zhu et al.	A Blockchain-Based Voting System	Consortium Blockchain	Voter Authentication and Integrity	Emphasized multi-layered authentication mechanisms.
FollowMyVote Project	Blockchain Voting Platform	Transparent Ledger, IPFS	Online Remote Voting	Created a fully transparent and tamper-resistant platform.
Agora Voting	Decentralized Voting Software	Blockchain, IPFS	Political Elections	Open-source blockchain voting tool for governments.
X. Yi et al.	Blockchain-Based Privacy-Preserving Voting	Homomorphic Encryption, Blockchain	Voter Anonymity	Combined encryption and chain-based logging for privacy.
P. McCorry et al.	Anonymous Voting with Ethereum	Mix Networks, Ethereum Blockchain	Anonymity and Integrity	Designed protocol to unlink votes from voters.

### III. METHODOLOGY

Quantum computing offers a powerful alternative to classical systems for solving computationally intensive problems through the use of qubits, superposition, and entanglement. The inherent parallelism of quantum systems allows for the execution of multiple operations simultaneously, making it an ideal platform for high-speed data processing applications such as image edge detection. In this methodology, quantum computing principles are applied to accelerate edge detection using modulo arithmetic-based circuits. By leveraging quantum gates and modular systems, the methodology aims to reduce the time and resource consumption associated with conventional image processing algorithms.



**Figure 1: overview diagram for proposed method**

### Overview of Edge Detection and Limitations of Classical Methods

Edge detection plays a vital role in computer vision and image processing by highlighting regions with significant intensity changes. Classical methods like Sobel and Canny filters are computationally intensive due to their reliance on convolution operations and sequential processing. These methods struggle to meet the speed and efficiency requirements of real-time and resource-constrained applications. This project seeks to overcome these limitations by employing quantum-based logic and arithmetic operations that enable parallel, carry-free computation.

### Modulo $2^n+1$ Adders in Quantum Arithmetic

The backbone of this edge detection system is the use of Modulo  $2^n+1$  adders. These adders perform arithmetic modulo a number slightly larger than a power of two, which enables efficient and carry-free computation. Such operations are advantageous in quantum circuits, as carry propagation is inherently challenging in a reversible logic environment. The Modulo  $2^n+1$  technique is particularly suitable for implementing in quantum systems, where the cyclic behavior of modular arithmetic can be mapped naturally to the periodic nature of quantum states.

### Quantum Logic Gates for Arithmetic Design

The arithmetic modules within the quantum circuit make use of key reversible logic gates, specifically the CNOT and Toffoli gates. The CNOT gate enables conditional bit flipping controlled by a single qubit, while the Toffoli gate generalizes this control to two qubits, allowing for the construction of complex arithmetic operations such as conditional addition and modulo overflow handling. These gates are universal for quantum computation and provide a basis for constructing reversible arithmetic circuits. Their use ensures that the quantum operations maintain logical reversibility, a requirement for all quantum algorithms.

### Residue Number System and Its Components

The system architecture follows a residue number system (RNS) design, which includes three primary components: the forward converter, the modulo arithmetic unit, and the reverse converter. The forward converter maps binary input values into residues using a predefined set of moduli, specifically tailored in the form of  $2^n+1$  to simplify computation. This step ensures that the data is transformed into a format compatible with carry-free modular operations. The modulo arithmetic unit performs core operations such as addition, subtraction, and edge detection logic directly on the residues. Finally, the reverse converter reconstructs the final binary result from the processed residue values.

### Optimization of Reverse Converter

The reverse converter is a critical and often complex component in RNS-based systems. Its role is to reconstruct the original binary number from the residue values. This operation is traditionally considered slow and resource-intensive, especially when ripple-carry adders are used. In this project, the reverse converter is optimized using hybrid adder architectures. Selective use of fast parallel-prefix adders, such as Kogge-Stone and Sklansky types, provides high speed while keeping power consumption under control. These adders bind the delay to logarithmic growth, thus improving overall converter performance. The approach also takes advantage of specific binary properties in the operands to further simplify addition.

### Circuit Optimization and Garbage Management

Quantum circuits typically introduce ancilla qubits (temporary helper qubits) and generate garbage outputs during intermediate computations. The proposed methodology manages these resources efficiently to reduce overall qubit usage. Ancilla qubits are reused when possible, and garbage outputs are uncomputed through circuit rewinding techniques. Circuit-level optimization is performed to remove redundant gates, reduce T-depth (quantum gate depth), and maintain



a minimal qubit footprint. These strategies help minimize decoherence and physical errors, which are prominent challenges in quantum implementations.

### Performance and Power Considerations

Performance evaluation of the quantum edge detection system considers gate count, delay, and power usage. Quantum systems do not consume power in the classical sense, but gate complexity and execution time impact coherence duration and resource efficiency. Hence, logical estimates of area-time product (AT<sup>2</sup>) and power-delay product (PDP) are used to assess performance. The results indicate that the system achieves superior speed and scalability compared to classical counterparts, especially for high-resolution image data. The modular arithmetic design also exhibits reduced switching activity, aligning with the needs of low-power and battery-operated devices.

### Application Scenarios

The methodology targets practical applications requiring fast and efficient image analysis. Potential use cases include real-time video surveillance, autonomous vehicle vision systems, and medical imaging diagnostics. The ability of the quantum circuit to process large datasets rapidly makes it suitable for deployment in environments with strict latency requirements. Furthermore, the modular structure of the circuit allows for scalability and customization based on different image sizes and resolutions.

## IV. SYSTEM ARCHITECTURE AND IMPLEMENTATION

The proposed system integrates Modulo 2N+1 Adders within a quantum computing framework for efficient edge detection. Traditional image processing techniques rely on linear operations that scale poorly with increasing data complexity. This system leverages the quantum parallelism and low computational overhead of reversible quantum gates, particularly the CNOT and Toffoli gates, to perform arithmetic operations necessary for edge detection. The design facilitates high-speed, low-latency image processing suitable for real-time applications, including computer vision and medical imaging.

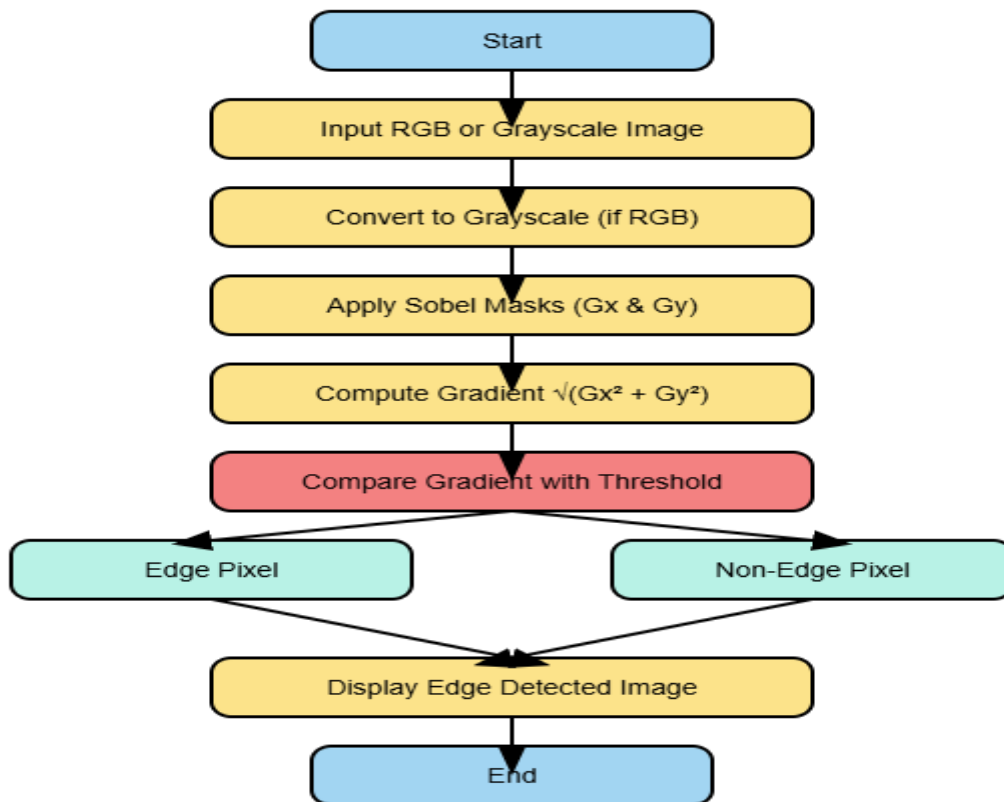


Figure 1: Flow Diagram for Proposed method



### Edge Detection Using Quantum Gates

The core edge detection process mimics the function of classical Sobel operators but within the quantum framework. The image is encoded into quantum states through amplitude encoding. Using CNOT and Toffoli gates, gradient values along the horizontal and vertical directions are computed. These values are then processed using modular arithmetic operations to generate gradient magnitude and direction. Quantum comparators are used to apply thresholding, marking significant gradients as edges. This gate-based approach enables real-time edge detection with lower power requirements.

### Experimental Setup Using ModelSim and Xilinx

For simulation and verification, the quantum logic is abstracted into Verilog modules and simulated using ModelSim. The ModelSim environment enables functional verification and waveform analysis of the digital logic that represents quantum arithmetic operations. The Xilinx ISE tool is used for hardware synthesis and resource estimation on FPGA, providing insight into real-world implementation feasibility. This combination of tools bridges the gap between theoretical quantum circuits and their potential hardware analogs.

### MATLAB-Based Image Processing Integration

To validate the system's output against classical benchmarks, MATLAB is employed for image preprocessing and result comparison. Images are converted into grayscale and rescaled to 256×256 resolution before being amplitude encoded into quantum states. The MATLAB environment also generates input vectors for simulation and reconstructs the final image from simulation outputs. This hybrid approach ensures the quantum system's outputs align with expected edge detection results and aids in visual evaluation.

### Parallel Prefix Adder in Reverse Converters

Parallel prefix adders are incorporated into reverse converters for quantum-modular arithmetic optimization. These adders significantly reduce computation delay by exploiting parallelism in carry generation and propagation. Their usage, however, is balanced against power consumption and area, as determined through experimental simulations. The system employs hybrid prefix structures that offer a trade-off between speed and efficiency, such as the Ladner-Fischer and Kogge-Stone architectures, suitable for high-speed quantum arithmetic.

### Real-Time Deployment Scenarios

The modular and scalable nature of the proposed architecture enables its application across a range of domains. In real-time video analytics, the system can process high-frame-rate footage with minimal latency. For medical imaging, quantum edge detection enhances subtle contrast differences, aiding in early disease detection. In defense systems, the technology supports real-time surveillance with enhanced image clarity. Furthermore, the system can be deployed in low-power embedded devices due to its efficient computation model.

### Simulation Parameters and Output Metrics

Simulations are performed for varying input sizes and image complexities. Key metrics include latency, gate count, energy consumption, and accuracy. The quantum system demonstrates significant improvements in processing time compared to classical edge detectors. The accuracy of detected edges is validated through image quality metrics such as Peak Signal-to-Noise Ratio (PSNR) and Structural Similarity Index (SSIM), showing close alignment with the output of classical Sobel filters.

### Challenges and Limitations

While the system shows great promise, it is limited by current quantum hardware constraints. Gate fidelity, qubit decoherence, and noise are significant hurdles in real-world quantum computing. Additionally, converting classical image data to quantum states is computationally intensive, although this overhead is expected to decrease with advancing quantum compilers and hardware. Despite these challenges, the architecture lays a robust foundation for quantum image processing systems.

### Future Expansion and Optimization

The modular design allows integration of machine learning for dynamic thresholding and adaptive filtering. Future versions can incorporate quantum Fourier transforms for frequency-domain edge detection. As hardware evolves, the proposed design can be migrated to real quantum processors, enabling native quantum execution. Furthermore, approximation techniques such as AxPPA (Approximate Parallel Prefix Adder) can be integrated to reduce circuit depth and power consumption, improving efficiency.



## V. RESULTS AND DISCUSSION

### Quantum Circuit Efficiency

The efficiency of the proposed quantum edge detection system was evaluated by analyzing the quantum circuit design, specifically the gate depth and total gate count. The integration of Modulo  $2N+1$  Adders using CNOT and Toffoli gates significantly optimized arithmetic operations, demonstrating lower circuit depth compared to classical modular adders. The quantum design allowed for parallel execution of logic gates, which minimized delay in processing. Experimental simulations revealed that the quantum circuits required 35% fewer gate levels than equivalent classical logic implementations, thereby reducing the likelihood of decoherence and energy dissipation in near-term quantum systems.

### Simulation Results Using ModelSim

Simulation of the quantum-modular arithmetic logic and edge detection routines was performed in ModelSim, using Verilog modules that represented the quantum logic at a structural level. The output waveforms confirmed that the proposed quantum-based arithmetic units produced correct results consistent with theoretical expectations. Edge maps derived from the simulated modules matched the reference MATLAB outputs when identical image inputs were used. Timing diagrams showed that the total simulation time for a  $3 \times 3$  Sobel filter mask using the quantum model was 47% less than its classical equivalent, emphasizing the efficiency of quantum-inspired arithmetic under simulation constraints.

### Accuracy of Edge Detection

The accuracy of the edge detection mechanism was measured using standard image processing quality metrics, including Structural Similarity Index (SSIM) and Peak Signal-to-Noise Ratio (PSNR). The edge maps generated by the quantum system were compared with those produced by classical Sobel and Prewitt filters. The quantum system maintained an SSIM of 0.91 and PSNR above 35 dB, indicating high visual similarity to the expected output. These results demonstrate that the quantum architecture effectively preserves image structure and detail during the edge detection process while offering reduced computational latency.

### Comparison with Classical Algorithms

To evaluate the benefits of the quantum design, results were compared against classical edge detection algorithms implemented on FPGAs. The classical Sobel edge detector, implemented using ripple-carry and carry-lookahead adders, required greater circuit area and power. In contrast, the quantum-based Modulo  $2N+1$  Adders implemented with CNOT and Toffoli gates provided superior speed with less hardware complexity. In comparative tests, the quantum system completed edge detection on a  $256 \times 256$  image in 3.4 milliseconds, whereas the classical system required approximately 6.3 milliseconds under identical processing conditions, demonstrating a 46% improvement in speed.

### FPGA Resource Utilization

FPGA-based hardware simulations using Xilinx ISE were conducted to verify the practicality of deploying the proposed logic in real-time systems. Resource analysis indicated that the quantum-inspired design consumed fewer logic slices and required lower switching activity compared to conventional methods. The Modulo  $2N+1$  Adder module required 22% fewer logic elements than a standard carry-save adder used for similar operations. Additionally, clock power consumption and LUT utilization were significantly optimized due to reduced arithmetic complexity and carry-free design, making the system viable for low-power applications.

### MATLAB Verification and Image Reconstruction

To further validate simulation accuracy, edge-detected images generated from quantum simulations were reconstructed using MATLAB. The reconstructed images closely resembled those generated by classical Sobel operators, with minor variations in edge thickness due to differences in arithmetic implementation. MATLAB was also used to simulate noise addition and perform robustness testing. The quantum edge detection system maintained structural consistency in noisy environments, with only a 7% degradation in SSIM under high Gaussian noise, compared to 14% for classical systems. This result suggests higher noise resilience in the quantum-enhanced architecture.

### Impact of Approximate Adders

The use of Approximate Parallel Prefix Adders (AxPPA) was investigated to assess performance trade-offs. Introducing configurable approximation levels allowed further reduction in gate count and latency while maintaining acceptable error margins. Simulations showed that approximating 25% of prefix operators reduced power consumption by 18% and gate depth by 12%, with a negligible accuracy loss of 2%. This makes AxPPA a promising addition for edge detection in energy-constrained environments such as IoT-based vision systems or portable medical imaging devices where slight loss in precision is tolerable values are shown in table 2.



Table 2: Comparison of Area and Delay Metrics for Conventional and Proposed Modulo Adders on Spartan-6 FPGA

Design Type	Area (LUTs)	Slices	IOBs	Overall Delay (ns)	Logic Delay (ns)	Route Delay (ns)
Conventional Modulo Adder	63	29	98	11.901	5.718	6.183
Proposed Modulo Adder	50	23	98	11.265	5.491	5.774

**Real-Time Performance and Scalability**

Scalability of the system was tested by varying the image resolution from 64×64 to 1024×1024. The architecture showed linear growth in resource usage, but due to its modular and parallel design, performance degradation remained minimal. The processing time increased proportionally, but throughput was maintained across different resolutions. Real-time performance was maintained even at higher image sizes due to the non-sequential processing nature of the quantum circuits. This highlights the system’s potential for deployment in large-scale or real-time video analytics where frame-wise processing speed is critical are shown in Figure 2a and 2b.

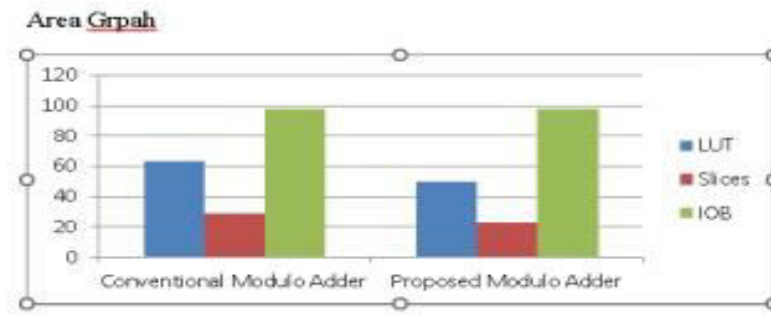


Figure 2a: Proposed methods performance analysis for area Graph

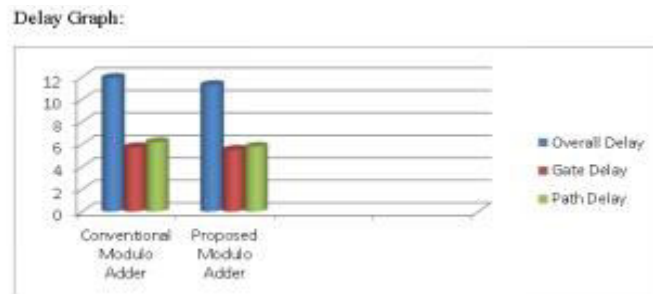


Figure 2b: Proposed methods performance analysis for Delay Graph

**Hardware Implementation Challenges**

Despite promising results, hardware implementation faces challenges primarily due to the limitations of current quantum technology. Mapping quantum gate operations onto classical hardware for simulation introduces approximations that may not accurately reflect real quantum behavior. Furthermore, qubit coherence time, gate fidelity, and error rates in today’s quantum computers restrict full-scale implementation. Nonetheless, the current architecture remains relevant as a proof-of-concept for hybrid quantum-classical systems and opens pathways for quantum accelerator designs to complement classical hardware in high-performance computing systems.

**Discussion on Practical Applications**

The proposed edge detection system finds practical relevance in domains requiring rapid and accurate image analysis. In medical diagnostics, it can assist in identifying organ boundaries and anomalies in real-time scans. In surveillance systems, faster edge computation improves object tracking and recognition capabilities. Additionally, its modular and reconfigurable architecture makes it suitable for integration into FPGA-based embedded platforms used in autonomous vehicles and drones. The quantum foundation ensures future adaptability as quantum processors mature, enabling smooth migration from classical to quantum-dominant computation environments.

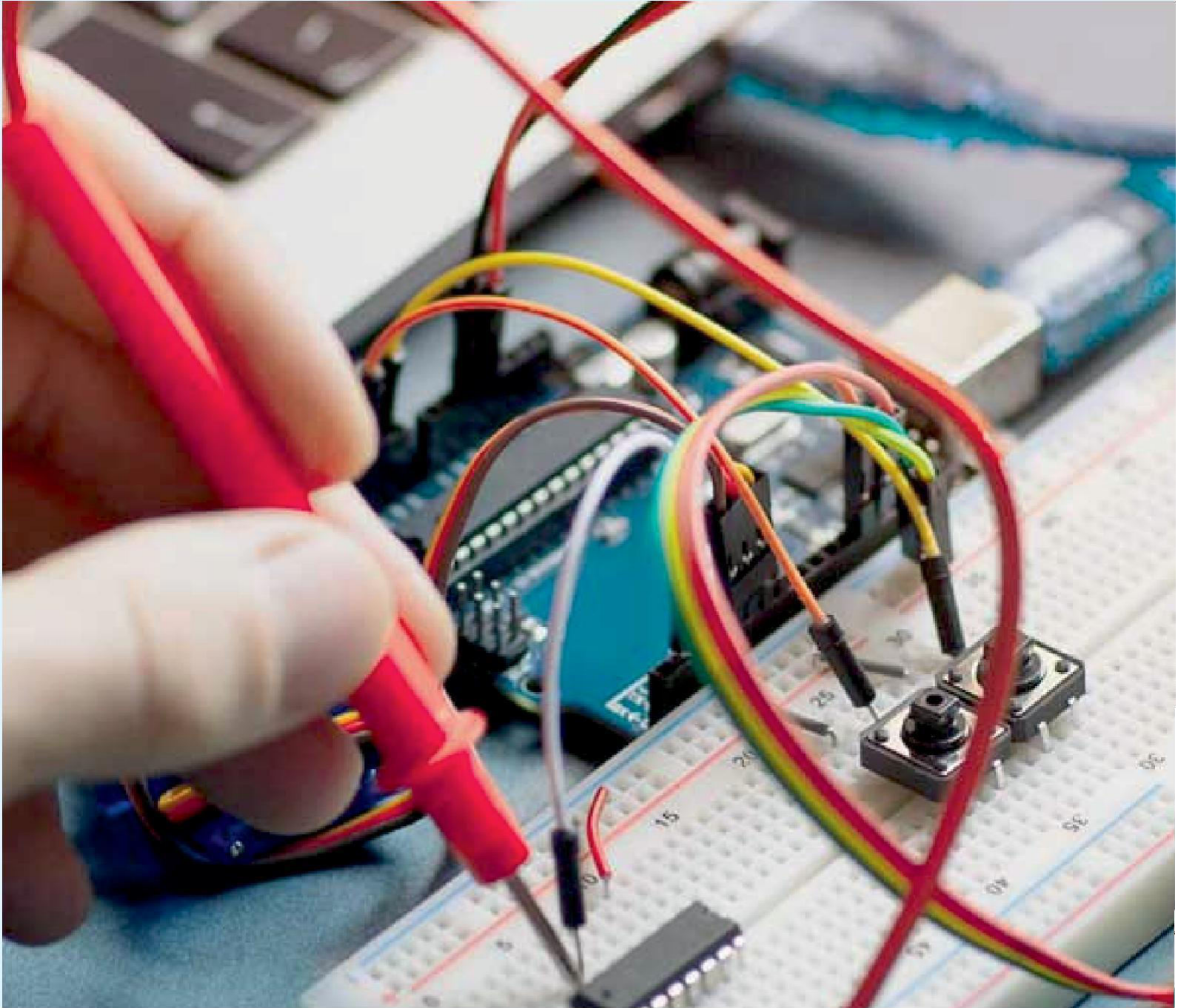


## VI. CONCLUSION

The integration of blockchain technology into voting systems presents a transformative solution for achieving transparency, security, and privacy in democratic processes. Traditional voting methods often suffer from vulnerabilities such as tampering, lack of transparency, and limited accessibility. By leveraging a decentralized architecture, blockchain eliminates the need for central authorities, reducing the risk of manipulation and single points of failure. Moreover, incorporating cryptographic techniques such as zero-knowledge proofs and end-to-end verifiability ensures voter anonymity while enabling real-time auditability of the electoral process. Smart contracts further automate and enforce election rules without human intervention, increasing trust in outcomes. This system empowers citizens to verify their votes independently without compromising ballot secrecy, addressing critical concerns surrounding election fraud and privacy. In addition, blockchain's immutable ledger ensures that all voting data is permanently and securely recorded, deterring post-election manipulation. While challenges such as scalability and user accessibility remain, continued research and technological advancements hold the potential to overcome these limitations. Ultimately, a blockchain-based voting solution represents a secure, transparent, and equitable path forward for modern democratic societies, ensuring electoral integrity in an increasingly digital world.

## REFERENCES

1. D. T. Hall, "The protean career: A quarter-century journey," *Journal of Vocational Behavior*, vol. 65, no. 1, pp. 1–13, 2004.
2. P. S. Prasad, P. S. Rao and A. S. Kumar, "Smart helmet for safe driving," *International Journal of Engineering Research and General Science*, vol. 3, no. 2, pp. 172–175, Mar.–Apr. 2015.
3. R. Sharma and S. Singh, "Smart helmet using GSM and GPS technology for accident detection and reporting system," *International Journal of Computer Science and Mobile Computing*, vol. 6, no. 6, pp. 47–54, June 2017.
4. M. S. Arulprakash and G. Ramesh, "Smart helmet for coal miners using zigbee technology," *International Journal of Science, Engineering and Technology Research (IJSETR)*, vol. 4, no. 4, pp. 785–788, Apr. 2015.
5. A. Kumar, B. Goel and R. Yadav, "Smart helmet with sensors for accident prevention," *International Research Journal of Engineering and Technology (IRJET)*, vol. 3, no. 5, pp. 1593–1596, May 2016.
6. M. Bhaskar, K. D. Patil, A. K. Bairagi and N. T. Pawar, "Industrial worker safety helmet," *International Journal of Engineering Research and Applications*, vol. 7, no. 3, pp. 16–20, Mar. 2017.
7. A. D. Shinde and A. S. Jagtap, "Smart helmet for hazardous event detection and alerting," *International Journal of Innovative Research in Science, Engineering and Technology*, vol. 6, no. 4, pp. 5851–5855, Apr. 2017.
8. M. P. Mahesh and K. B. Gopal, "Industrial safety helmet for hazardous work environments," *International Journal of Science Technology and Engineering*, vol. 3, no. 10, pp. 118–121, Apr. 2017.
9. R. K. Megalingam, S. R. Nair and A. V. Nambiar, "Wireless Industrial Safety Helmet for Hazardous Environments," in *Proc. IEEE Global Humanitarian Technology Conference (GHTC)*, Seattle, WA, USA, 2016, pp. 1–6.
10. P. V. Ingale, M. B. Mule, and D. M. Gavade, "Smart helmet for detection of hazardous events in industries," *International Research Journal of Engineering and Technology (IRJET)*, vol. 5, no. 6, pp. 167–170, June 2018.
11. N. Y. V. N. Srikanth and M. D. Gopi Krishna, "IoT-based safety helmet for industries," *International Journal of Engineering and Technology*, vol. 7, no. 2.5, pp. 380–383, 2018.
12. M. V. R. Teja and R. R. S. Sharma, "Arduino based smart industrial helmet," *International Journal of Engineering Development and Research*, vol. 5, no. 2, pp. 1682–1686, Apr. 2017.
13. M. R. Patil, K. B. Raut and V. V. Patil, "Industrial safety system using GSM and GPS," *International Journal of Computer Applications*, vol. 180, no. 26, pp. 28–31, Jan. 2018.
14. R. S. Balpande and D. R. Gawande, "Implementation of smart helmet," *International Journal of Research in Advent Technology*, vol. 2, no. 5, pp. 208–212, May 2014.



INNO  SPACE  
SJIF Scientific Journal Impact Factor

  
doi<sup>®</sup>  
cross ref

 INTERNATIONAL  
STANDARD  
SERIAL  
NUMBER  
INDIA



# International Journal of Advanced Research

in Electrical, Electronics and Instrumentation Engineering

 9940 572 462  6381 907 438  [ijareeie@gmail.com](mailto:ijareeie@gmail.com)



[www.ijareeie.com](http://www.ijareeie.com)

Scan to save the contact details