



e-ISSN: 2278-8875

p-ISSN: 2320-3765

International Journal of Advanced Research

in Electrical, Electronics and Instrumentation Engineering

Volume 13, Issue 5, May 2024

ISSN INTERNATIONAL
STANDARD
SERIAL
NUMBER
INDIA

Impact Factor: 8.317

☎ 9940 572 462

☎ 6381 907 438

✉ ijareeie@gmail.com

@ www.ijareeie.com



Interior Turbo PFC Analysis & Execution with Big Capacity Needs

**M. Gokula Priya, Dr. S. Vijaya Shankar, Dr.K. Krishnamoorthi, Dr.S. Arun Kumar,
Dr. R. Satheesh Kumar**

PG Scholar, Power System Engineering, Sona College of Technology, Salem, Tamil Nadu, India

Associate Professor, Department of EEE, Sona College of Technology, Salem, Tamil Nadu, India

Assistant Professor, Department of EEE, Sona College of Technology, Salem, Tamil Nadu, India

Assistant Professor, Department of EEE, Sona College of Technology, Salem, Tamil Nadu, India

Assistant Professor, Department of EEE, Sona College of Technology, Salem, Tamil Nadu, India

ABSTRACT: While high-performance power electronics gadgets and passive switching networks are used in numerous studies aimed at improving the efficacy of interleaved boost converter (IBCs) used for power factor correction (PFC), this strategy does not assist reduce hardware expenditures or simplify systems. Three inherent parameters-the rate of switching their worth, the boost inductor value, and the output voltage value-that affect the efficacy of the IBC PFC are identified and in his study. Considering the aforementioned results as well as restrictions on power factor, maximum magnetic flux density, boost inductor volume, and current ripple, an optimized design approach for high-eficacy IBC PFC is suggested. Gadgets are used to construct an IBC PFC sample. The outcome the trial confirm indicate the suggested strategy may enhance IBC PFC efficacy throughout the full-load spectrum when using inexpensive, low-performance gadgets.

KEY WORDS: Power factor correction (PFC), Interleaved boost converter (IBC), Ac, Dc, PWM, Rectifier.

I. INTRODUCTION

Factor correction (PFC) frequently uses interspersed burst converters (IBCs) because of their many benefits, which include minimal current reverberation tiny screening quantity, large power volume, etc. In applications whose compact dimension or minimal weight are required, like in aboard charges (OBCs), computer adapters, and aviation generators, energy density is a critical issue which restricts the applicability of IBC PFC. A large amount of space is occupied by the cooling system within the IBC PFC, that conveys heat produced by blackouts to keep gadget operating temperatures within the right limits. As a result, lowering the radiator size via enhanced effectiveness is required. When efficacy is raised by increasing the expense of either software or hardware, so the radiator dimension can be reduced, the overall loss and radiation are reduced, thus the electrical dense within the IBC PFC will increase. Numerous studies are currently done on enhancing IBC PFC efficacy by structure modifications that produce smooth switching conditions that lower moving waste.

This work present a new type of soft-switching frequent showings resonate synthesizer for inductive heat purposes. Given a scenario of numerous soft-switching activities, the initial charge harmonic contemporary might be permanently managed through using a form of phasor and varying a shift in the phase (PS) tilt via two half-bridge rectifier devices. Furthermore, an alternate feature energy management technique that utilizes uneven modulation of pulse width (PWM) and PS tilt adjustment in a single inverter device is suggested to increase efficacy at minimal energy output ranges. With its 1kW-60 kHz HF-R converter test, the test shows the key functions for electricity control & soft-switching tasks. After that, a theoretical coherence is accessed via standpoint of practically.

Regarding thermal induction equipment, this endeavor suggests a novel design of current fed high-voltage sequence demand responsive synthesizer that utilizes an accessory switching unit plus a bidirectional snubber circuit. The main objective of this study is to show how very shifted membrane cell combined by a membrane-clamped half-bridge ZVS HF integrator design employing a PWM management technique may produce an exceptionally high power dense. The suggested inverter design operates on the basis of an imbalanced rate-of-operation control using a PWM technique.



Tests utilizing their soft-switching running ranges demonstrate the qualities of power conversion efficacy and high time AC modulation operational outcomes.

II. PROPOSED SYSTEM

The establishment of novel groups for diligently-as well as soft-switching inverter layouts that are utilized in the creation of dynamic power factor adjustments (PFCs) in the dc-dc and ac-dc conversions. The objective aims to create conversions having a high power density, excellent performance, reduced radiation interference, plus an increased ratio of power. Recently, new regulations governing the supply ratio of power including overall harmonic distortion (THD) within power electronics have been mandatory. The most common types of live PFC designs are those using switch-mode geometrics with pulse width modulation (PWM), especially boost, buck-boost, and their derivatives.

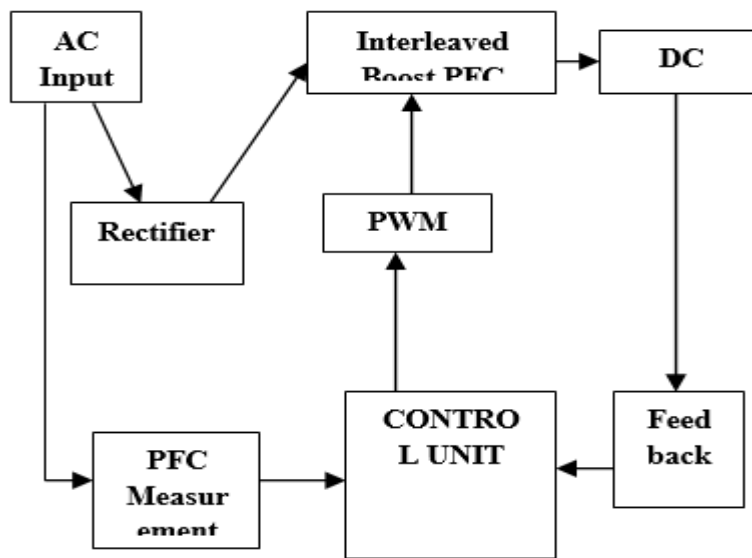


Fig.No.1: PROPOSED SYSTEM

A. NEURAL NETWORK

The conception and execution developing smart systems are now a critical component for the development and creation of improved control techniques. In such instances, the application of computational neural networks provides answers to problems outside the scope of linear frame works. A reproduction of a person’s brain is called an artificial neural network.

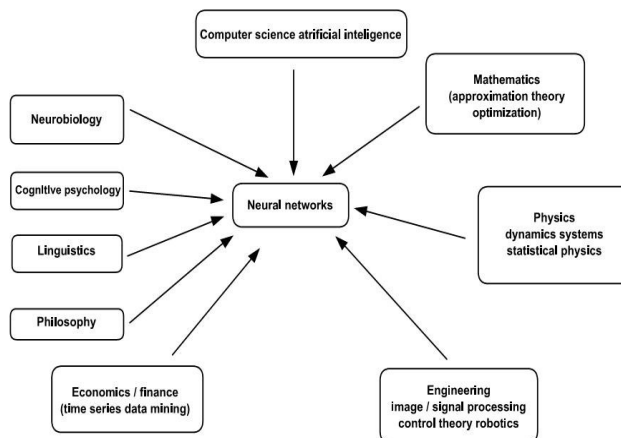


Fig.No.2: NEURAL NETWORK



Our brain’s sixth sense understanding, recognition, categorization, clustering, detecting errors, and correction is integrated with the aid of artificial neural networks. This mimics the functioning of a healthy brain. Somebody could say that a neural network is similar to the human brain in the ways listed below:

- It gains skills by education.
- The information exists as synapse weights, which are the intensities of linkages between neurons.

B. INTERLEAVED TURBO CONVERTER

Interleaving attribute governs how the interwoven turbo converter functions. Dual surge conversions that run 180° away from sync in tandem are included in the system. Because the impact winds inside the coil are inactive stage, it frequently cancel themselves and thus lessen the fluctuating current in the source that is brought forth by the increased flows, ILB1 and ILB2, add up to the input voltage, power. Additionally, by flipping 180° from the period, the actual rate of switching is raised and there are less waves in the source flow. Consequently, there is going fewer EMI screens on the side receives data.

III. RESULT

The result of this paper is obtained using the MATLAB/SIMLINK model. The Simulation model of the paper is shown in the figure 4. The outcome of this paper satisfies the prerequisites.

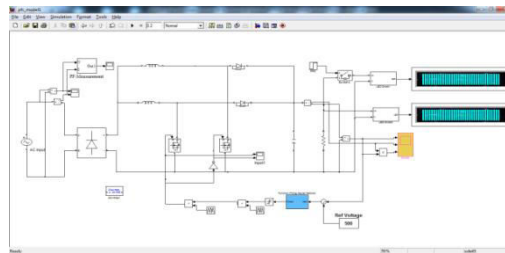


Fig.No.4: SIMLINK MODEL

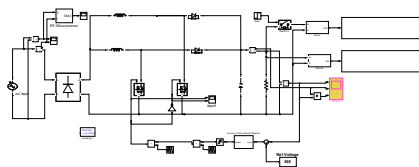


Fig.No.5: SIMLINK MODEL OF CONVERTER

Fig.5 represents the Simulink model of the interleaved converter.

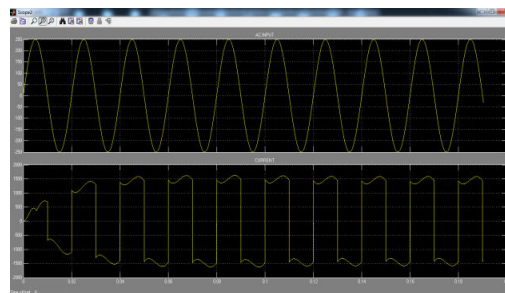


Fig.No.6: INPUT VOLTAGE AND CURRENT

Fig 6 represents the input voltage and current, while x-axis indicates the current and y-axis indicates the voltage.



||Volume 13, Issue 5, May 2024||

|DOI:10.15662/IJAREEIE.2024.1305039|

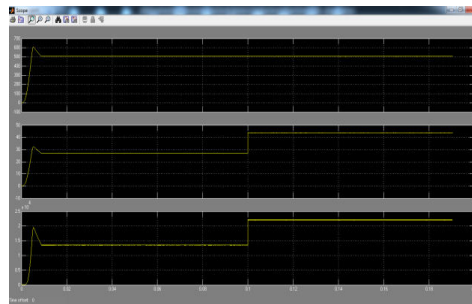
**Fig.No.7: OUTPUT VOLTAGE, CURRENT, POWER.**

Fig 7 represents the output voltage and current, and power. By this we can clearly see the efficacy is far better than others.

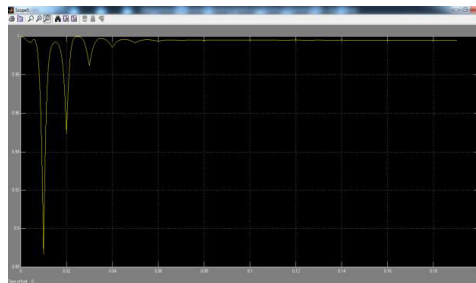
**Fig.No.8: POWER FACTOR**

Fig 8 represents the power factor. The graph represents the very good power factor which we are in need.

IV. CONCLUSION

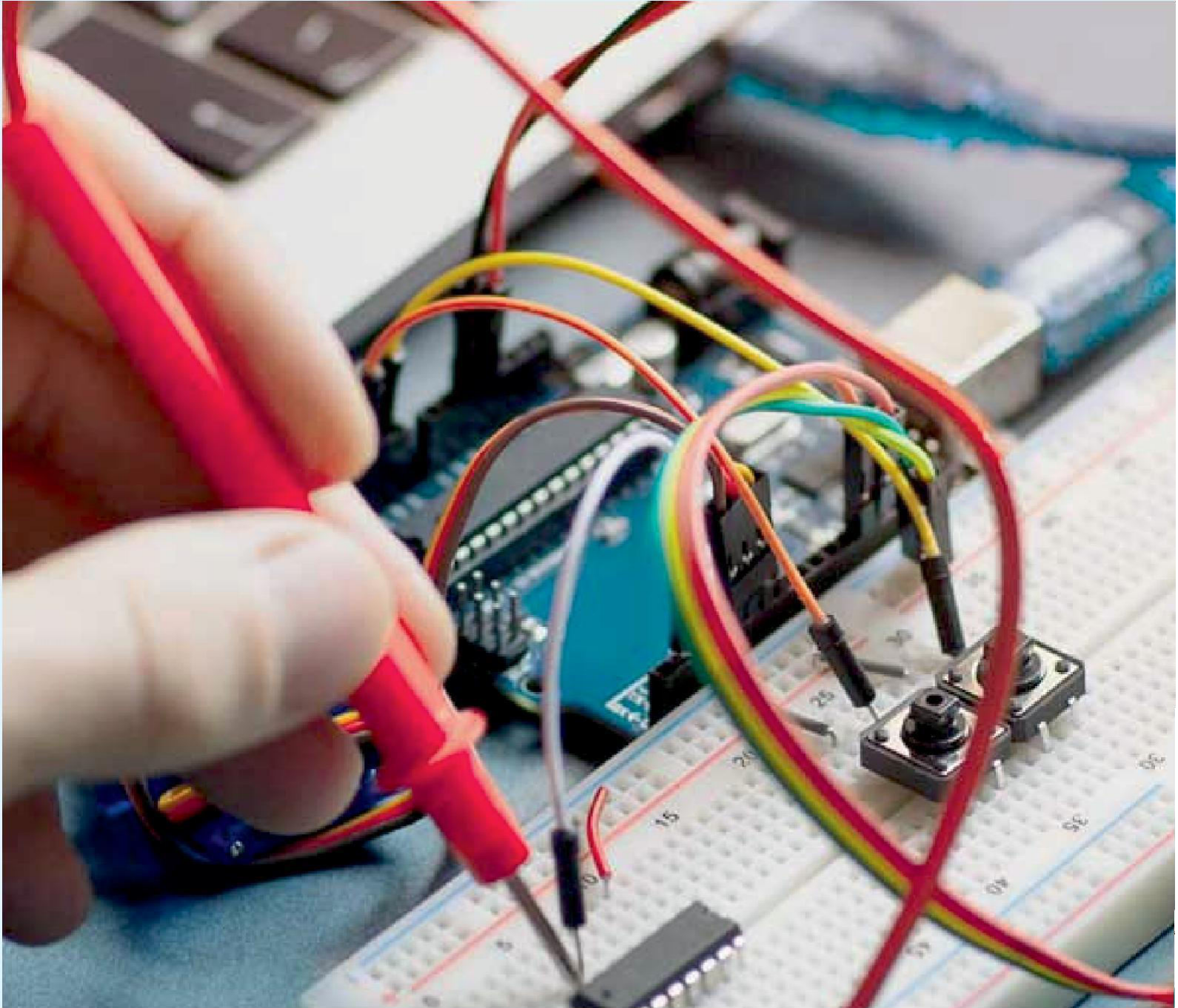
The scientifically confirmed combined boost PFC rectifier featuring a significant gain final voltage was presented. The anticipated frequencies examined in the research exhibit a good fit with the actual outcomes of the experiment. The circuit's efficacy satisfies all required output and input criteria. The suggested design has the ability to readily satisfy the prerequisites. Furthermore, the recommended configuration can be used with nearly every type of household electronics with 150W capacity on sale due to its improved efficacy and elevated power factor. Hence, the newly designed regulation circuit may easily obtain power factor through implementing arbitrary PWM surveillance, as it needs the use of one toggle.

REFERENCES

- [1] ON Semiconductor®, *Power Factor Correction (PFC) Handbook*, Rev. 4, Feb. 2011.
- [2] M. Mahdavi and H. Farzanehfar, "Bridgeless SEPIC PFC Rectifier with Reduced Components and Conduction Losses," *IEEE Transactions Industrial Electronics*, vol. 58, No. 9, pp. 4153-4160, Sep. 2011.
- [3] L. Huber, L. Gang, and M. M. Jovanovic, "Design-Oriented Analysis and Performance Evaluation of Buck PFC Front End," *IEEE Transactions Power Electron*, vol. 25, No. 1, Jan. 2010.
- [4] Y. Jang and M. M. Jovanovic, "Bridgeless High-Power-Factor Buck Converter," *IEEE Transactions Power Electron*, vol. 26, No. 2, Feb. 2011.
- [5] R. Itoh, K. Ishizaka, and H. Okada, "Single-phase buck rectifier employing voltage reversal circuit for sinusoidal input current waveshaping," *IEE Proceedings Electric Power Applications*, vol. 146, No. 6, pp. 707-712, Nov. 1999.
- [6] R. Oruganti and M. Palaniapan, "Inductor Voltage Control of Buck-Type Single-Phase AC-DC Converter," *IEEE Transactions Power Electronics*, vol. 15, No. 2, pp. 411-416, Mar. 2010.
- [7] M. A. Al-Saffar, E. H. Ismail, and A. J. Sabzali, "Integrated Buck–Boost–Quadratic Buck PFC Rectifier for Universal Input Applications," *IEEE Transactions Power Electronics*, vol. 24, No. 12, pp. 2886-2896, Dec. 2009.
- [8] L. Petersen, "Input-Current-Shaper Based on a Modified SEPIC Converter with Low Voltage Stress," in *IEEE 32nd Power Electronics Specialists Conference*, vol. 2, pp. 666-671, Jun. 2001.



- [9] P. Scalia, "A Double-Switch Single-Stage PFC Offline Switcher Operating in CCM with High Efficiency and Low Cost," in *IEEE 29th Power Electronics Specialists Conference*, vol. 2, pp. 1041-1047, May 1998.
- [10] C. Jingquan, D. Maksimovic, and R. Erickson, "A New Low-Stress Buck-Boost Converter for Universal-Input PFC Applications," in *IEEE 6th Applied Power Electronics Conference*, vol. 1, pp. 343-349, Mar. 2001.
- [11] H. M. Swamy, K. P. Guruswamy, and S. P. Singh, "Design, Modeling and Analysis of Two Level Interleaved Boost Converter," IEEE International Conference on Machine Intelligence and Research Advancement (ICMIRA), pp. 509-514, December, 2013.
- [12] A. Ghosh, S. Banerjee, M. K. Sarkar, and P. Dutta, "Design and Implementation of Type-II and Type-III Controller for DC-DC Switched-Mode Boost Converter by using K-Factor Approach and Optimization Techniques," *IET Power Electronics*, vol. 9, no. 5, pp. 938-950, 2016. (doi: 10.1049/iet-pel.2015.0144)
- [13] H. B. Shin, J. G. Park, S. K. Chung, H. W. Lee, T. A. Lipo, Generalised Steady-State Analysis of Multiphase Interleaved Boost Converter With Coupled Inductors. *IEE Proc. Electr. Power Appl*, Vol.152, No.3, Page 584–594,2005.
- [14] P. Li and B. Lehman, "A design method for paralleling current mode controlled DC-DC converters," *IEEE Trans. on Power Electron.*, vol. 19, no.3, May, 2004.
- [15] I. Cadirci, A. Yafavi and M. Ermis, "Unity power factor boost converter with phase shifted parallel IGBT operation for medium power applications." *IEE Proc.-Electr. Power Appl*. Vol.149, No. 3, May 2002.
- [16] D. Maksimovic, R. Zane, and R. Erickson, "Impact of Digital Control in Power Electronics." IEEE International Symposium on Power Semiconductor Devices & Ics Kitakyushu, Japan, May 2004.
- [17] A. Newton, T. C. Green, and D. Andrew, AC/DC Power Factor Correction Using Interleaving Boost and Cuk Converters. *IEE Power Electronics & Variable Speed*, Conference Publication, No.475, Page 293-298, 2000.
- [18] B. A. Miwa, D. M. Otten, and M. F. Schlecht, High Efficiency Power Factor Correction Using Interleaving Techniques. *IEEE Applied Power Electronics Conference and Exposition*, Page.557-568, 1992.
- [19] M. Chen, J. Sun, Reduced-Order Averaged Modeling of Active-Clamp Converters. *IEEE Transactions on Power Electronics*, Volume 21, No.2, Page 487-494, 2006.
- [20] H.Riazmontazer, J.S.Moghani, M.Taheri, H.Bayat, Averaged Modeling Of A New Bi-directional DC-DC Converter. *IEEE 2nd Power Electronics, Drive System and Technologies Conference*, page 574–579, 2011.
- [21] Wai R. J., Lin C. Y., Duan R. Y. and Chang Y. R. (2007) "High-efficiency DC-DC converter with high voltage gain and reduced switch stress" *IEEE Trans. Ind. Electron.*, vol. 54, no. 1, pp. 354-364. 15.
- [22] Wu T. F., Lai Y. S., Hung J. C. and Chen Y. M. (2008) "Boost converter with coupled inductors and buck-boost type of active clamp" *IEEE Trans. Ind. Electron.*, vol. 55, no. 1, pp. 154-162.



INNO  SPACE
SJIF Scientific Journal Impact Factor

 **doi**[®]
cross **ref**

 **INTERNATIONAL
STANDARD
SERIAL
NUMBER
INDIA**



International Journal of Advanced Research

in Electrical, Electronics and Instrumentation Engineering

 9940 572 462  6381 907 438  ijareeie@gmail.com



www.ijareeie.com

Scan to save the contact details