

# **Fuzzy Based PV-Active Power Filter Combination Supplies Power to Nonlinear Load and Control Utility Current**

P.Trivikramarao <sup>1</sup>, K.Mahesh <sup>2</sup>

PG Scholar, Dept. of EEE, B.V.Raju Institute of Technology, Narsapur, India

Asst. Professor, Dept. of EEE, B.V.Raju Institute of Technology, Narsapur, India

**ABSTRACT:** Normally increasing utilization of electronic devices in homes leads the researchers to concentrate on harmonic problem besides the degrading power quality, the harmonic current flow may interfere with the adjacent telephone lines. The harmonics in a residential system is difficult because of the dispersed nature of the residential loads. In this paper, a three-phase three-wire system, as well as a detailed PV generator, dc/dc boost converter to extract maximum radiation power using maximum power point tracking, associate degreed dc/ac voltage source converter to act as an APF, is presented. The photovoltaic (PV) generation is more and more popular these days, while typical loads need additional high-power quality. Basically, a PV generator supply to nonlinear loads is desired to be integrated with a function as an active power filter (APF). The instantaneous power theory is applied to design the PV-APF controller that shows reliable performances. FUZZY LOGIC is being used for controlling compared to other controllers The MATLAB/SimpowerSystems tool has proved that the combined system will at the same time inject maximum power from a PV unit and compensate the harmonic current drawn by nonlinear loads.

**KEYWORDS:** Active power filter (APF), instantaneous power theory, photovoltaic (PV), power quality, renewable energy.

## **I.INTRODUCTION**

Nowadays the overall power system is changing, with many Distributed Generation (DG) units, such as wind turbines, Photovoltaic (PV) modules and fuel cells, being developed and installed. In several countries the PV systems power supplied to the electrical grid is having more visibility due to many governmental incentives. The PV system is particularly attractive as a renewable source for DG units due to its

relative small size, noiseless operation, simple installation and the possibility to put it close to the user. The development of grid-connected systems is demanding a better evaluation of the performance of the available PV systems under fault conditions, as well as the quality of the energy generated by them. For this reason, the grid connection of power converters in DG systems, should be carefully designed and controlled in order to achieve an optimal operation of the generation plants under generic circumstances [1]. Renewable energy resources demand is going on increasing due to power demand and decreasing of the fossil fuels. And also the requirement of power quality is very essential concern along with power supply reliability. The grid-connected photovoltaic (PV) generator has today become more popular because of its reliable performance and its ability to come up with power from clean energy resources. The dc output voltage of PV arrays is connected to a dc/dc boost converter using a most power point tracking (MPPT) controller to maximize their produced energy. Then, that converter is coupled to a dc/ac voltage source device (VSC) to let the PV system push electric power to the ac utility. The local load of the PV system can specifically be a nonlinear load, such as computers, compact fluorescent lamps, and plenty of different home appliances, that needs distorted currents. Development of a method to compensate the distribution system harmonics is equally urgent. during this case, PV generators should provide the utility with distorted compensation capability, that makes currents injected/absorbed by the utility to be sinusoidal. Therefore, the harmonic compensation function is realized through flexible control of dc/ac VSC. instantaneous power theory has successfully completed active power filter (APF) designing with good performance. However, the PV-APF combination has simply been gradually

# International Journal of Advanced Research in Electrical, Electronics and Instrumentation Engineering

(An ISO 3297: 2007 Certified Organization)

Vol. 5, Special Issue 8, November 2016

developed for several years. this combination is capable of simultaneously compensating power factor, current imbalance, and current harmonics, and also of injecting the energy generated by PV with low total harmonic distortion (THD).

Even once there is no energy available from PV, the combination will still operate to enhance the power quality of the utility. After that, the control techniques are improved in some later efforts to develop PV inverters with real power injection and APF features. However, their research did not show consistent results obtained by their projected theories, and they are applicable for a single-phase PV only. The PV-APF system helps the utility supply a unity power issue and pure curved currents to the local nonlinear loads by generating the oscillating and imaginary components. once there's an excess power, that PV unit can only inject average power to the utility. As a result, this system is considered as a distributed APF, which is a better solution than adopting passive filters or centralized APFs. the most contributions of this paper ar threefold.

- 1) For the first time, a fully complete PV-APF combination system is presented.
- 2) The controller based on instantaneous power theory and instantaneous power balance is proposed to replace the conventional dq-current controller for a PV unit.
- 3) Flexible operation modes of the PV-APF combination system are possible in the proposed model.

## II. PV-APF COMBINATION SYSTEM

The PV-APF configuration is shown in Fig. 1, which consists of the following.

- 1) The PV 5series-66parallel array, which is SunPower SPR-305-type, delivers a maximum of 100-[kW] power at 1000-W/m<sup>2</sup> solar irradiance, assuming that there is no battery energy storage system connected to the dc bus.

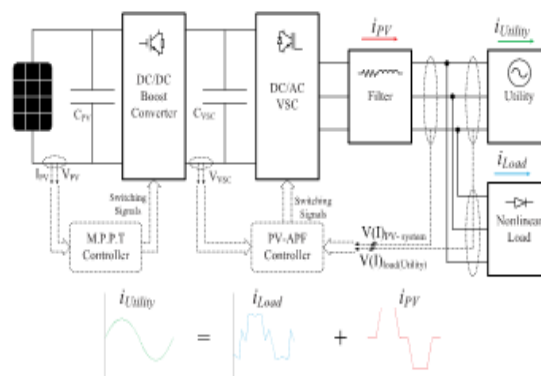


Figure 1. Proposed design of PV-APF combination.

- 2) A 5-kHz boost dc/dc converter implements MPPT by an incremental conductance–integral regulator technique, that automatically varies the duty cycle so as to generate the desired voltage to extract maximum power.
- 3) The dc bus is connected to a two-level three-phase dc/ac VSC with a CVSC capacitor. The dc/ac VSC converts the 500 [V] dc to 260 [V]/60 [Hz] ac supplying to local nonlinear loads and connects to a stiff utility. The dq-current and PV-APF and APF controllers square measure applied for this dc/ac VSC afterward.
- 4) A 10-kVar capacitor bank filters out switching harmonics produced by the dc/ac VSC.
- 5) the loads include a three-phase diode rectifier supplying a current of 450 or 50 [A] at dc side and one phase diode rectifier with 50-[A] dc current connecting between phase A and phase B to create an overall unbalanced load.
- 6) This PV-APF combination system is connected on to the utility for shunt active filter implementation.

### A. DYNAMIC MODEL OF PV ARRAY

The dynamic model of PV cell is shown in Fig. 2. PV array consists of N string connected in parallel and every string consists of M number of modules connected in series.



# International Journal of Advanced Research in Electrical, Electronics and Instrumentation Engineering

(An ISO 3297: 2007 Certified Organization)

Vol. 5, Special Issue 8, November 2016

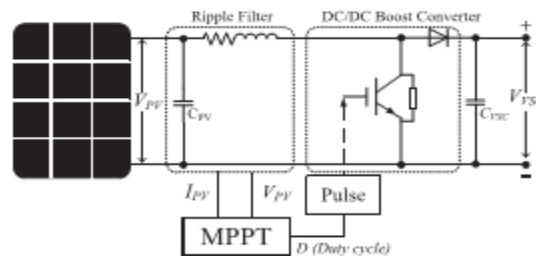


Figure 4. Controller mechanism of the boost converter.

## III. INSTANTANEOUS POWER BALANCE

Instantaneous power flow among the components of the PV-APF system simplified in Fig. 5 may be a compromise between technical constraints and designed targets.

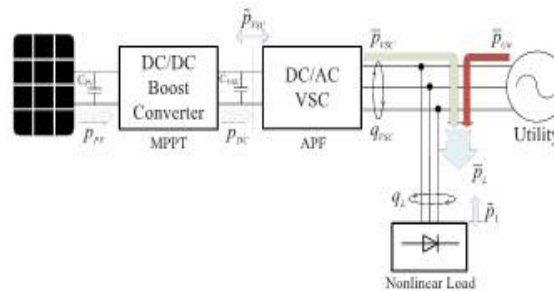


Figure 5. Instantaneous power flows among the PV-APF system.

The dc/dc boost convertor regulates its semiconductor switches to extract the utmost power generated by PV array (pPV). The MPPT methods might be chosen appropriately in any specific circumstance. beyond that convertor with the power output pDC, the dc/ac VSC keeps a major role in implementing a given control duty. At the dc side, the power idea is consistent. However, at the ac side, the instantaneous power includes both the active half (pVSC) and the imaginary part (qVSC). The losses at the dc/dc boost convertor and the dc/ac VSC are neglected.

$$P_{PV} \approx P_{DC} \approx P_{VSC}. \quad (3)$$

The load demand includes real power and imaginary power. In general, the real and imaginary power include two parts: 1) an average (superscript  $\bar{\quad}$ ) one, and 2) an oscillating (superscript  $\tilde{\quad}$ ) one, which are realized through a low-pass filter (LPF) (or rarely a high-pass filter)

$$\begin{cases} P_{VSC} = \bar{P}_{VSC} + \tilde{P}_{VSC} \\ P_L = \bar{P}_L + \tilde{P}_L \\ q_L = \bar{q}_L + \tilde{q}_L \end{cases} \quad (4)$$

The APF function results in pure sinusoidal currents from the utility.. In general, there are two cases of utility power flow:

- 1) PV supplies enough power for local nonlinear loads and injects its excess power to the utility;
- 2) PV supplies one part of nonlinear loads consuming and the other part of load power is received from the utility.

Real power  $p$  is calculated using  $v, i$  at ac side which is the same as in dc side  $V_{PV} \times I_{PV}$  of the PV if no loss while the imaginary power is calculated at ac side only. The average real power  $\bar{p}$  represents the energy flow per time in one direction only that is effectively converted into work and, therefore, has to be supplied from the utility if the PV does not provide enough of this power to the load demand, while oscillating real power  $\tilde{p}$  represents oscillating energy flow per time.  $\bar{q}$  power corresponds to conventional three phase reactive power and does not contribute to transferred power while  $\tilde{q}$  power is exchanged among three phases..

There is an instantaneous power balance among the three parts at the point of common coupling (PCC). If the PV-APF combination can supply undesirable powers to the load, the utility will supply only average part of the real power. Under that circumstance, sinusoidal currents are obtained. The controlling mechanism is to define those undesirable powers from the load and then to make the PV-APF combination generate it. Obviously, the rest of the

## International Journal of Advanced Research in Electrical, Electronics and Instrumentation Engineering

(An ISO 3297: 2007 Certified Organization)

Vol. 5, Special Issue 8, November 2016

required power is supplied from the utility. Fig. 5 illustrates case 2, where the utility has to inject one part of active power ( $p_{Uti}$ ) for the load. In this case, the pure fed currents from the utility will be easily realized using an APF function, which means that it provides only the average components. The balanced relation among instantaneous powers in Fig. 5 is clarified in the following equations:

$$\begin{cases} p_{Uti} = \bar{p}_{Uti} \\ q_{VSC} = q_L \\ p_{VSC} + p_{Uti} = p_L \\ \bar{p}_{VSC} + \bar{p}_{Uti} = \bar{p}_L \\ \bar{p}_{VSC} = \bar{p}_L \end{cases} \quad (5)$$

The dc/ac VSC modulates real and imaginary power balance among those parts of system.

### IV. CONTROLLERS FOR DC/AC CONVERTER

In this section, the controllers for dc/ac VSC based on instantaneous power theory and instantaneous power balance are presented. In a conventional way, the dq-current controller is used to inject maximum real power from PV and zero reactive power to keep unity power factor of the utility. While a nonlinear load is connected close to PV position, the proposed unique PV-APF controller should be used to compensate the harmonics and help transfer the PV power. At night (no irradiance and no battery) or when there is no PV array, the APF controller is switched into the system in order to operate the CVSC capacitor just for an APF purpose.

#### A. PV-APF CONTROLLER

The dc/ac VSC integrated by an APF function should provide the harmonic elimination and reactive power compensation and simultaneously inject the maximum power generated by PV units. The controller is established based on the instantaneous power theory, where all the parameters are processed instantaneously. The input signals of that controller include utility voltages ( $v_{abc}$ ), nonlinear load currents ( $i_{abcL}$ ), output currents of dc/ac VSC ( $i_{abcVSC}$ ), utility injected currents ( $i_{abcUti}$ ), and dc-link voltage  $V_{VSC}$  (to prevent overcharge dc-link capacitor).

$$\begin{cases} p_L = p_{VSC} + p_{Uti} \\ q_L = q_{VSC} + q_{Uti} \end{cases} \quad (6)$$

Since the target is laid on the load, its consuming power is continuously measured and analyzed. Using the Clarke transformation, the instantaneous real power ( $p_L$ ) and imaginary power ( $q_L$ ) of the load can be calculated, as shown in the following equations:

$$\begin{bmatrix} v_\alpha(i_\alpha) \\ v_\beta(i_\beta) \end{bmatrix} = \sqrt{\frac{2}{3}} \begin{bmatrix} 1 & -\frac{1}{2} & -\frac{1}{2} \\ 0 & \frac{\sqrt{3}}{2} & -\frac{\sqrt{3}}{2} \end{bmatrix} \begin{bmatrix} v_a(i_{aL}) \\ v_b(i_{bL}) \\ v_c(i_{cL}) \end{bmatrix} \quad (7)$$

$$\begin{bmatrix} p_L \\ q_L \end{bmatrix} = \begin{bmatrix} v_\alpha & \beta \\ -v_\beta & v_\alpha \end{bmatrix} \begin{bmatrix} i_\alpha \\ i_\beta \end{bmatrix} \quad (8)$$

In general, the real and imaginary power include two parts: 1) an average (superscript  $\bar{\quad}$ ) one, and 2) an oscillating (superscript  $\tilde{\quad}$ ) one, which are realized through an LPF (or rarely a high-pass filter). The LPF cutoff frequency must be selected carefully as to the inherent dynamics of loads that lead to compensation errors during transients. Unfortunately, the unavoidable time delay of the LPF may degrade the controller performance. In practice, a fifth-order Butterworth LPF with a cutoff frequency between 20 and 100 [Hz] has been used successfully depending on the spectral components in oscillating part that is to be compensated

$$\begin{cases} p_L = \bar{p}_L + \tilde{p}_L \\ q_L = \bar{q}_L + \tilde{q}_L \end{cases} \quad (9)$$

## International Journal of Advanced Research in Electrical, Electronics and Instrumentation Engineering

(An ISO 3297: 2007 Certified Organization)

Vol. 5, Special Issue 8, November 2016

The average part derives from the fundamental component of nonlinear load current, while the oscillating part results from the harmonics and negative-sequence components. After successful compensation, the imaginary power and the oscillating part of the real power will come from the dc/ac VSC. The utility, in that case, supplies only one fraction of the average power required from the load. The rest is supposed to be from the PV array. In addition, the dc-link voltage regulator determines an extra amount of real power ( $p^-$  loss) that causes additional flow of energy to (from) the dc-link capacitor CVSC in order to keep its voltage around a fixed reference value ( $V_{VSCref}$ ). Eventually, reference powers are passed to a current references calculation block. These ideas make the following equations:

$$\begin{cases} \bar{p}_L + \bar{p}_L = \bar{p}_{VSC} + \bar{p}_{VSC} + \bar{p}_{Uti} + \bar{p}_{loss} \\ \bar{q}_L + \bar{q}_L = \bar{q}_{VSC} + \bar{q}_{VSC} + \bar{q}_{Uti} \end{cases}$$

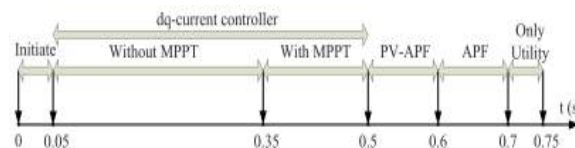
$$\Rightarrow \begin{cases} \bar{q}_{VSC} = \bar{p}_L - \bar{p}_{Uti} + \bar{p}_{loss} \\ \bar{q}_{VSC} = \bar{q}_L - \bar{q}_{Uti} \\ \bar{p}_{VSC} = \bar{p}_L \\ \bar{q}_{VSC} = \bar{q}_L \end{cases} \quad (10)$$

$$\Leftrightarrow \begin{cases} p_{VSC}^{ref} = p_L - \bar{q}_{Uti} - \bar{p}_{loss} \\ q_{VSC}^{ref} = q_L - \bar{q}_{Uti} \end{cases} \quad (11)$$

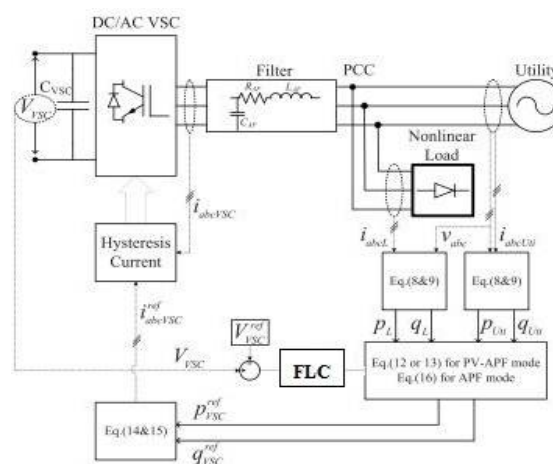
If the  $p^-$  loss is supplied by the PV unit and the PV-APF combination compensates all imaginary power of load demand, (12) is changed to

$$\begin{cases} p_{VSC}^{ref} = p_L - \bar{q}_{Uti} - \bar{p}_{loss} \\ q_{VSC}^{ref} = q_L \end{cases} \quad (12)$$

### B. PV UNIT PERFORMANCE



**Figure 6. Operation modes of simulation.**



**Fig 7. Controller topology of dc/ac VSC in the PV-APF combination.**

# International Journal of Advanced Research in Electrical, Electronics and Instrumentation Engineering

(An ISO 3297: 2007 Certified Organization)

Vol. 5, Special Issue 8, November 2016

## V. FUZZY LOGIC CONTROLLER

In FLC, basic control action is determined by a set of linguistic rules. These rules are determined by the system. Since the numerical variables are converted into linguistic variables, mathematical modeling of the system is not required in FC.

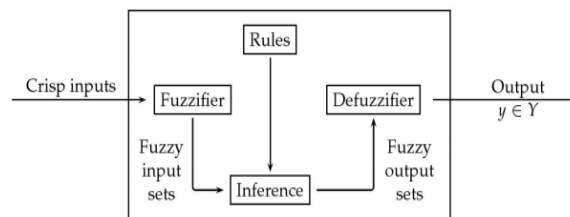


Fig.7.Fuzzy logic controller

The FLC comprises of three parts: fuzzification, interference engine and defuzzification. The FC is characterized as i. seven fuzzy sets for each input and output. ii. Triangular membership functions for simplicity. iii. Fuzzification using continuous universe of discourse. iv. Implication using Mamdani's, 'min' operator. v. Defuzzification using the height method.

TABLE I: Fuzzy Rules

Change in error	Error						
	NB	NM	NS	Z	PS	PM	PB
NB	PB	PB	PB	PM	PM	PS	Z
NM	PB	PB	PM	PM	PS	Z	Z
NS	PB	PM	PS	PS	Z	NM	NB
Z	PB	PM	PS	Z	NS	NM	NB
PS	PM	PS	Z	NS	NM	NB	NB
PM	PS	Z	NS	NM	NM	NB	NB
PB	Z	NS	NM	NM	NB	NB	NB

**Fuzzification:** Membership function values are assigned to the linguistic variables, using seven fuzzy subsets: NB (Negative Big), NM (Negative Medium), NS (Negative Small), ZE (Zero), PS (Positive Small), PM (Positive Medium), and PB (Positive Big). The Partition of fuzzy subsets and the shape of membership CE(k) E(k) function adapt the shape up to appropriate system. The value of input error and change in error are normalized by an input scaling factor.

In this system the input scaling factor has been designed such that input values are between -1 and +1. The triangular shape of the membership function of this arrangement presumes that for any particular E(k) input there is only one dominant fuzzy subset. The input error for the FLC is given as

$$E(k) = \frac{P_{ph}(k) - P_{ph}(k-1)}{V_{ph}(k) - V_{ph}(k-1)} \quad (13)$$

$$CE(k) = E(k) - E(k-1) \quad (14)$$

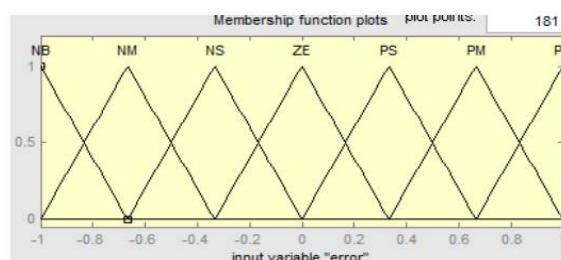


Fig.8.Membership functions

# International Journal of Advanced Research in Electrical, Electronics and Instrumentation Engineering

(An ISO 3297: 2007 Certified Organization)

Vol. 5, Special Issue 8, November 2016

**Inference Method:** Several composition methods such as Max–Min and Max-Dot have been proposed in the literature. In this paper Min method is used. The output membership function of each rule is given by the minimum operator and maximum operator. Table 1 shows rule base of the FLC.

**Defuzzification:** As a plant usually requires a non-fuzzy value of control, a defuzzification stage is needed. To compute the output of the FLC, „height“ method is used and the FLC output modifies the control output. Further, the output of FLC controls the switch in the inverter. In UPQC, the active power, reactive power, terminal voltage of the line and capacitor voltage are required to be maintained. In order to control these parameters, they are sensed and compared with the reference values. To achieve this, the membership functions of FC are: error, change in error and output

The set of FC rules are derived from

$$u = -[\alpha E + (1-\alpha)C] \quad (15)$$

Where  $\alpha$  is self-adjustable factor which can regulate the whole operation. E is the error of the system, C is the change in error and u is the control variable. A large value of error E indicates that given system is not in the balanced state. If the system is unbalanced, the controller should enlarge its control variables to balance the system as early as possible. On the other hand, small value of the error E indicates that the system is near to balanced state.

## VI. SIMULATION VALIDATION

The main parameters of the system used in the simulation study are indicated in Table 1. The simulation is run in a period of 0.75 s. The important time instances are: 1) at 0.05 s, turn ON MPPT and VSC dq-current controller; 2) at 0.35 s, activate MPPT; 3) at 0.5 s, switch VCS dq-current controller to PV-APF controller; 4) at 0.6 s, switch to APF controller without PV; 5) at 0.7 s, switch PV-VSC out of system; and 6) at 0.75 s, stop simulation.

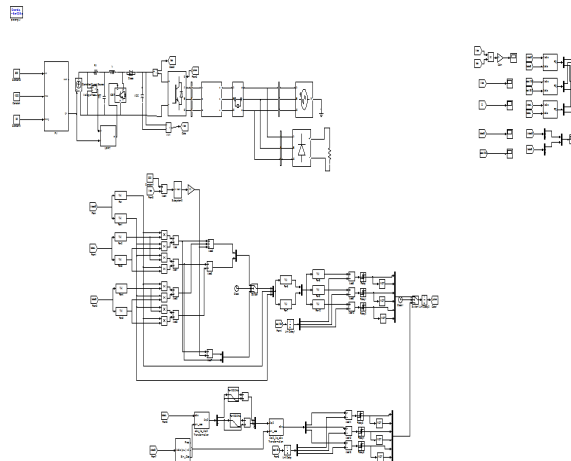


Figure 8. simulation model of proposed system



# International Journal of Advanced Research in Electrical, Electronics and Instrumentation Engineering

(An ISO 3297: 2007 Certified Organization)

Vol. 5, Special Issue 8, November 2016

**TABLE 1. System parameters in simulation.**

Utility	
Voltage ( $v_{abc}$ )	260v
Frequency (f)	60HZ
$R_s, L_s$	ideal
DC/AC VSC	
DC link voltage ( $V_{VSG}$ )	500V
DC link capacitor ( $C_{AF}$ )	2400 $\mu F$
SHAPF filter ( $R_{AF}, L_{AF}$ )	0.02mH
Unbalanced non linear load	
3 phase diode rectifier	
Constant DC current, $I_{DC3}$	450A and 50A
1 phase diode rectifier	
Constant DC current, $I_{DC1}$	50A
Fuzzy controller	

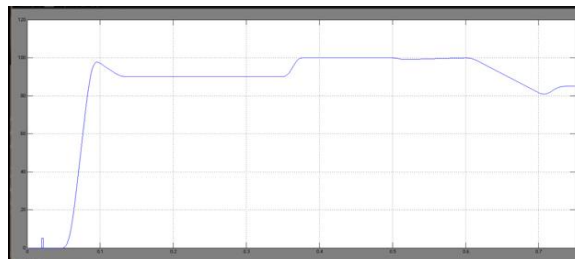
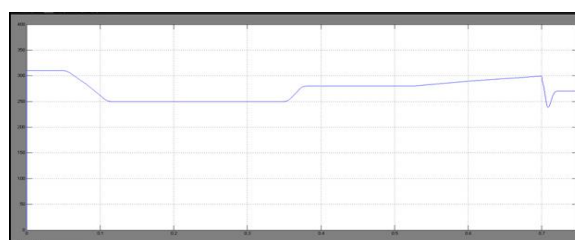
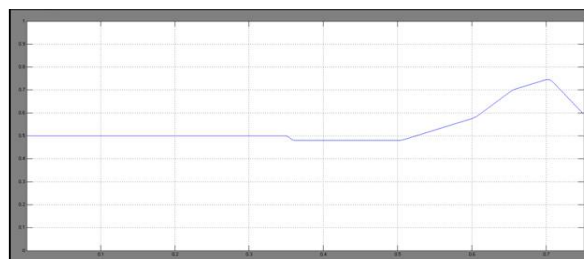


Figure 9. Output power of PV during running time.



(a)



(b)

Figure 10. Duty cycle and VPV changed by MPPT.  
(a)Output voltage of PV unit. (b) Duty cycle of MPPT.

# International Journal of Advanced Research in Electrical, Electronics and Instrumentation Engineering

(An ISO 3297: 2007 Certified Organization)

Vol. 5, Special Issue 8, November 2016

## Active power filter performance

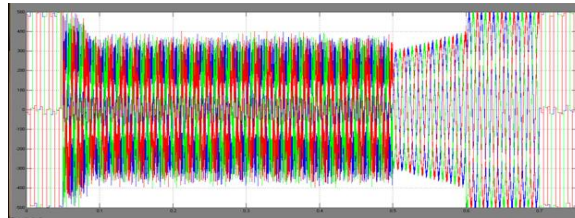


Fig 11. Utility supplied current waveform.

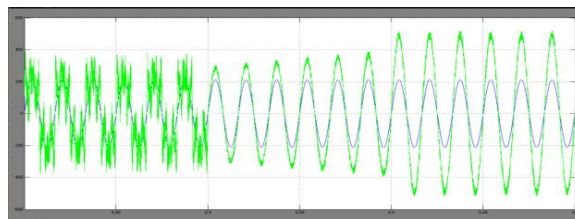
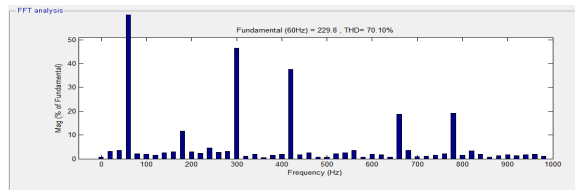
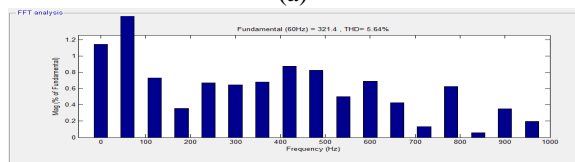


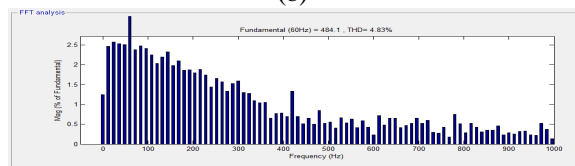
Figure 12. Utility supplied current and PCC voltage waveform.



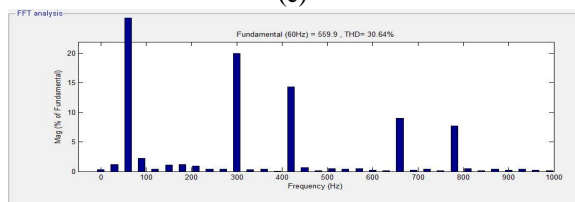
(a)



(b)



(c)



(d)

Figure 13. THD in four modes of PV system operation while utility supplies power. (a) dq-current mode. (b) PV-APF mode. (c) APF mode. (d) Only utility supplies load.

# International Journal of Advanced Research in Electrical, Electronics and Instrumentation Engineering

(An ISO 3297: 2007 Certified Organization)

Vol. 5, Special Issue 8, November 2016

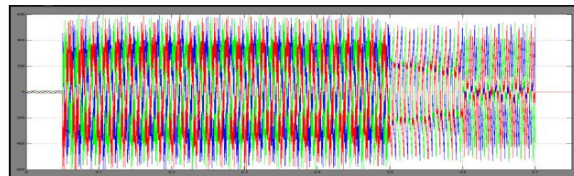


Fig 14. PV supplied current waveform.

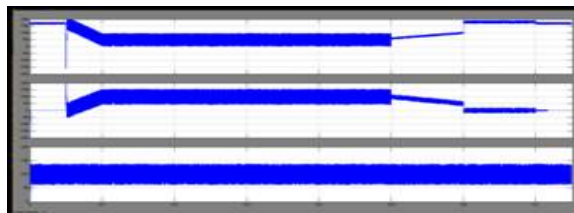


Figure 15. Real power from the (a) utility, (b) PV unit, and (c) load, while the utility supplies power.

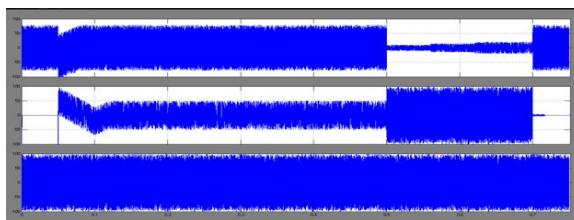


Figure 16. Imaginary power from the (a) utility, (b) PV unit, and (c) load, while the utility supplies power.

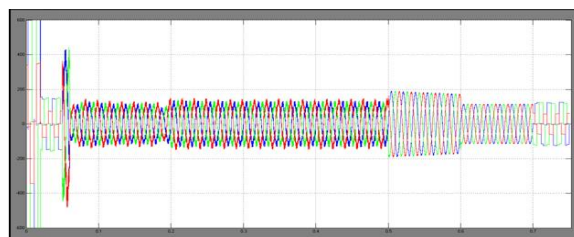
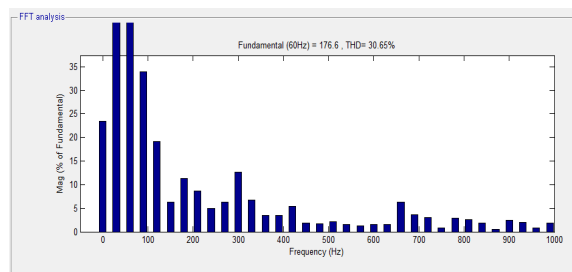


Fig 17. Utility received current waveform.



(a)

# International Journal of Advanced Research in Electrical, Electronics and Instrumentation Engineering

(An ISO 3297: 2007 Certified Organization)

Vol. 5, Special Issue 8, November 2016

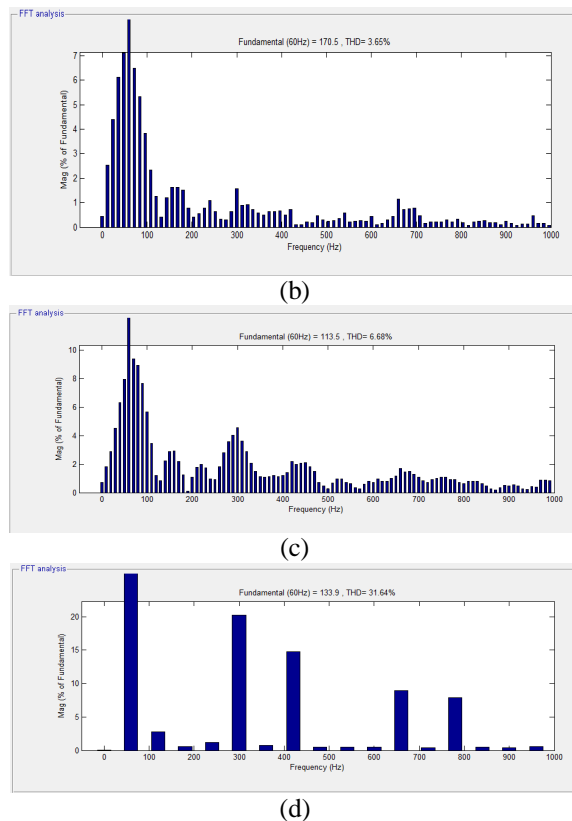


Figure 18. THD in four modes of PV system operation while utility receives power. (a) dq-current mode. (b) PV-APF mode. (c) APF mode. (d) Only utility supplies load.

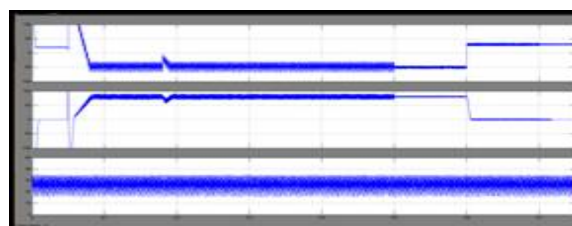


Figure 19. Real power from the (a) utility, (b) PV unit, and (c) load, while the utility receives power.

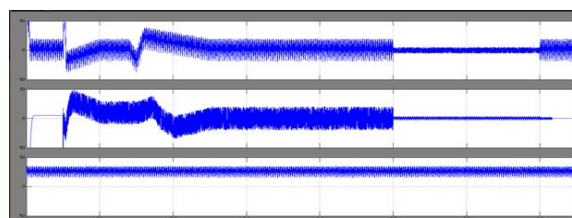


Figure 20. Imaginary power from the (a) utility, (b) PV unit, and (c) load, while the utility receives power.

## VI. CONCLUSION

In this paper, a PV-APF combination system with a local controller is proposed. To compensate the utility current without any harmonics The controller implements 2 purposes, that are activity power from the PV unit and filtering the harmonics of the local nonlinear load The new controller based on instantaneous power balance has been



ISSN (Print) : 2320 – 3765  
ISSN (Online): 2278 – 8875

# International Journal of Advanced Research in Electrical, Electronics and Instrumentation Engineering

(An ISO 3297: 2007 Certified Organization)

Vol. 5, Special Issue 8, November 2016

explained consequently. The MATLAB/Simpower Systems simulation shows sensible performances of this controller. Here fuzzy controller is used compared to alternative controllers because of its accurate performance. The positive influence of MPPT on increasing PV power output is additionally valid. The shift among 3 controllers to dc/ac VSC brings different current waveforms. As a result, the conventional dq-current controller should not be applied once PV is connected to a local nonlinear load regarding power-quality viewpoint. whereas a PV unit is deactivated, the APF function will still operate. It is, therefore, technically possible for these power electronics-interfaced dg units to actively regulate the power quality of the distribution system as an auxiliary service, which will certainly make those dg units extra competitive.

## REFERENCES

- [1] PV-Active Power Filter Combination Supplies Power to Nonlinear Load and Compensates Utility Current, nguyen duc tuyen (member, ieee) and goro fujita (member, ieee)
- [2] L. Hassaine, E. Olias, J. Quintero, and M. Haddadi, "Digital power factor control and reactive power regulation for grid-connected photovoltaic inverter," *Renewable Energy*, vol. 34, no. 1, pp. 315–321, 2009.
- [3] N. Hamrouni, M. Jraidi, and A. Cherif, "New control strategy for 2-stage grid-connected photovoltaic power system," *Renewable Energy*, vol. 33, no. 10, pp. 2212–2221, 2008.
- [4] M. G. Villalva, J. R. Gazoli, and E. R. Filho, "Comprehensive approach to modeling and simulation of photovoltaic arrays," *IEEE Trans. Power Electron.*, vol. 24, no. 5, pp. 1198–1208, May 2009.
- [5] N. R. Watson, T. L. Scott, and S. Hirsch, "Implications for distribution networks of high penetration of compact fluorescent lamps," *IEEE Trans. Power Del.*, vol. 24, no. 3, pp. 1521–1528, Jul. 2009.
- [6] I. Houssamo, F. Locment, and M. Sechilariu, "Experimental analysis of impact of MPPT methods on energy efficiency for photovoltaic power systems," *Int. J. Elect. Power Energy Syst.*, vol. 46, pp. 98–107, Mar. 2013.
- [7] M. A. G. de Brito, L. P. Sampaio, G. Luigi, G. A. e Melo, and C. A. Canesin, "Comparative analysis of MPPT techniques for PV applications," in *Proc. Int. Conf. Clean Elect. Power (ICCEP)*, Jun. 2011, pp. 99–104.
- [8] M. El-Habrouk, M. K. Darwish, and P. Mehta, "Active power filters: A review," *Proc. IEE – Elect. Power Appl.*, vol. 147, no. 5, pp. 403–413, Sep. 2000.
- [9] H. Akagi, Y. Kanagawa, and A. Nabae, "Generalized theory of the instantaneous reactive power in three-phase circuits," in *Proc. Int. Conf. Power Electron.*, Tokyo, Japan, 1983, pp. 1375–1386.
- [10] Y. W. Li and J. He, "Distribution system harmonic compensation methods: An overview of DG-interfacing inverters," *IEEE Ind. Electron. Mag.*, vol. 8, no. 4, pp. 18–31, Dec. 2014.
- [11] S. Kim, G. Yoo, and J. Song, "A bifunctional utility connected photovoltaic system with power factor correction and UPS facility," in *Proc. Conf. Rec. 25th IEEE Photovolt. Specialists Conf.*, May 1996, pp. 1363–1368.