



# **Implementation and Modeling of Adaptive Filters in UPQC**

Annपूर्ना Hanuman Singh Yadav<sup>1</sup>, Naveen Kumar Mucha<sup>2</sup>,

Student (ME), Dept. of Electrical Power System, MSS'S CET, Jalna, India<sup>1</sup>

Assistant Professor, Dept. of Electrical Power System, MSS'S CET, Jalna, India<sup>2</sup>

**ABSTRACT:** This paper presents design, modeling and simulation of Unified power quality conditioner system to improve the power quality. Unified power quality conditioner consists of combined series and shunt active power filters for simultaneous compensation of voltage and current. The Unified power quality conditioner system is modeled using the elements of Simulink and it is simulated using MATLAB. A new synchronous-reference-frame based control method and d-q-0 theory is used to improve the power quality at the point of common coupling on power distribution systems under unbalanced and distorted load conditions. The results are analyzed and presented using MATLAB Simulink software.

**KEYWORDS:** Active Power Filter (APF), PhaseLockedLoop (PLL), Power Quality (PQ), Synchronous ReferenceFrame (SRF), Unified Power-Quality Conditioner (UPQC).

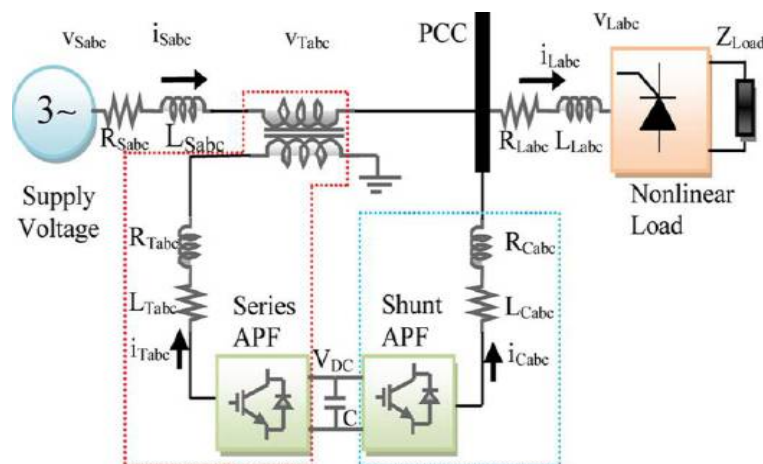
## **I. INTRODUCTION**

UNIFIED POWER-QUALITY CONDITIONER (UPQC) systems were widely studied by many researchers as an eventual method to improve the PQ in electrical distribution systems [3]. The term “power quality” (PQ) has gained significant attention in the past few years. The advancement in the semiconductor device technology has made it possible to realize most of the power electronics based devices/prototypes at commercial platform. As a rule of thumb in all areas of engineering, the proper utilization of the resources that we have in the most efficient way has led to great development and is the major concern for most engineers in their respective fields. Reactive power compensation is one of the common yet very important issues for power system engineers at transmission as well as at distribution level. It is a well-known fact that a typical distribution network consist of distribution transformer, motor loads, etc., demands reactive power. This load-reactive power demand level is mainly affected by the type of loads present on the network. The capacitor banks have been used to compensate the load-reactive power demand. It is the Simplest and under certain conditions, is a very effective way to compensate the load-reactive power demand. This traditional way has certain major disadvantages, such as fixed compensation, possible Occurrence of resonance condition with nearby loads, switching transient, bulky size, aging effect, etc. [6].

Harmonic currents can cause additional losses and voltage waveform distortions, and so cause poor power quality. Voltage and current harmonics have undesirable effects on power system components and operation. In some instances, interaction between the harmonics and power system parameters (R-L-C) can cause harmonics to amplify with severe consequences. Also, harmonics can lead to improper operation of protective devices, such as relays and fuses. Harmonic currents, particularly of the third order, cause overheating of transformers and neutral conductors. Consumers and distribution systems are sometimes forced to derate their transformers because of the heating effects of harmonic currents. Neutral conductors of supply systems and installations have the same cross-sectional area as phase conductors. There is already evidence of the use of neutral conductors of larger cross-section in newer commercial installations to take account of the increased third harmonic currents. The retrospective installation of such larger neutral conductors in existing networks would result in increased costs, including significant increase in demand for copper and aluminum. Also, the flow of harmonic currents in power supply systems may affect telephone communication. Harmonic voltages in excess of the recommended limits can result in distributors having to replace their transformers, switchgear and lines at prohibitive cost.

## II. UNIFIED POWER-QUALITY CONDITIONER (UPQC)

The UPQC consists of two voltage source inverters connected back to back with each other sharing a common dc link. One inverter is controlled as a variable voltage source in the series Active Power Filter (APF), and the other as a variable current source in the shunt APF.



**Fig. 1 Configuration of the UPQC**

Fig.1 shows the basic configuration of the unified power quality Conditioner. The shunt converter Of the UPQC must be connected as close as possible to the non-linear load, instead of the network side. The UPQC approach is the most powerful compensator for a scenario as depicted in Fig 1, where the supply voltage  $V_s$  is itself already unbalanced & distorted & is applied critical load that require high power quality .On the other hand, part of the total load include nonlinear loads that inject a large amount of harmonic current into the network, which should be filtered [1]. In fig1, current  $i_L$  represents all nonlinear loads that should be compensated. The shunt active filter of the UPQC can compensate all undesirable current components, including harmonics, imbalances due to negative- and zero sequence components at fundamental frequency, and the load reactive power as well. The same kind of compensation can be performed by the series active filter for the supply voltage, hence, the simultaneous compensation performed by the UPQC guarantees that both the compensated voltage  $V_L$  at load terminal and compensated current is that is drawn from the power system become balanced, so that they contains no unbalance from negative- and zero sequence components at fundamental frequency. Moreover, they are sinusoidal and in phase, if the load reactive power is also compensated. Additionally, the shunt active filter has to provide dc link voltage regulation, absorbing or injecting energy from or into the power distribution system, to cover losses in converters, and correct eventual transient compensation errors that lead to undesirable transient power flows into the UPQC. It might be interesting to design UPQC controllers that allow different selections of the compensating functionalities [1].

## III. THE UPQC CONTROL STRATEGY

### A. Shunt Control Strategy:

The shunt active power filter is provided the current and the reactive power (if the system need) compensation. It acts as a controlled current generator that compensated the load current to force the source currents drained from the network to be sinusoidal, balanced and in phase with the positive-sequence system voltages. The conventional SRF method can be used to extract the harmonics contained in the supply voltages or currents. For current harmonic compensation, the distorted currents are first transferred into two-phase stationary coordinates using  $\alpha-\beta$  transformation (same as in  $p-q$  theory). After that, the stationary frame quantities are transferred into synchronous rotating frames using cosine and sine functions from the phase-locked loop (PLL). The sine and cosine functions help to maintain the synchronization with supply voltage and current. Similar to the  $p-q$  theory, using filters, the harmonics and fundamental components are separated easily and transferred back to the  $a-b-c$  frame as reference signals for the filter. The conventional SRF algorithm is also known as  $d-q$  method, and it is based on  $a-b-c$  to  $d-q-0$

## International Journal of Advanced Research in Electrical, Electronics and Instrumentation Engineering

(An ISO 3297: 2007 Certified Organization)

Vol. 5, Issue 5, May 2016

transformation (park transformation), which is proposed for active filter Compensation [3]. The instantaneous three-phase currents and voltages are transformed to  $\alpha$ - $\beta$  coordinates as shown in equation 1 to 6.

$$I_{so} = 13[i_{sa} + i_{sb} + i_{sc}] \dots\dots\dots \text{eq1}$$

$$I_{s\alpha} = 23[i_{sa} - 12 i_{sb} - 12 i_{sc}] \dots\dots\dots \text{eq2}$$

$$I_{s\beta} = 12[ i_{sb} - i_{sc}] \dots\dots\dots \text{eq3}$$

$$V_{so} = 13[v_{sa} + v_{sb} + v_{sc}] \dots\dots\dots \text{eq4}$$

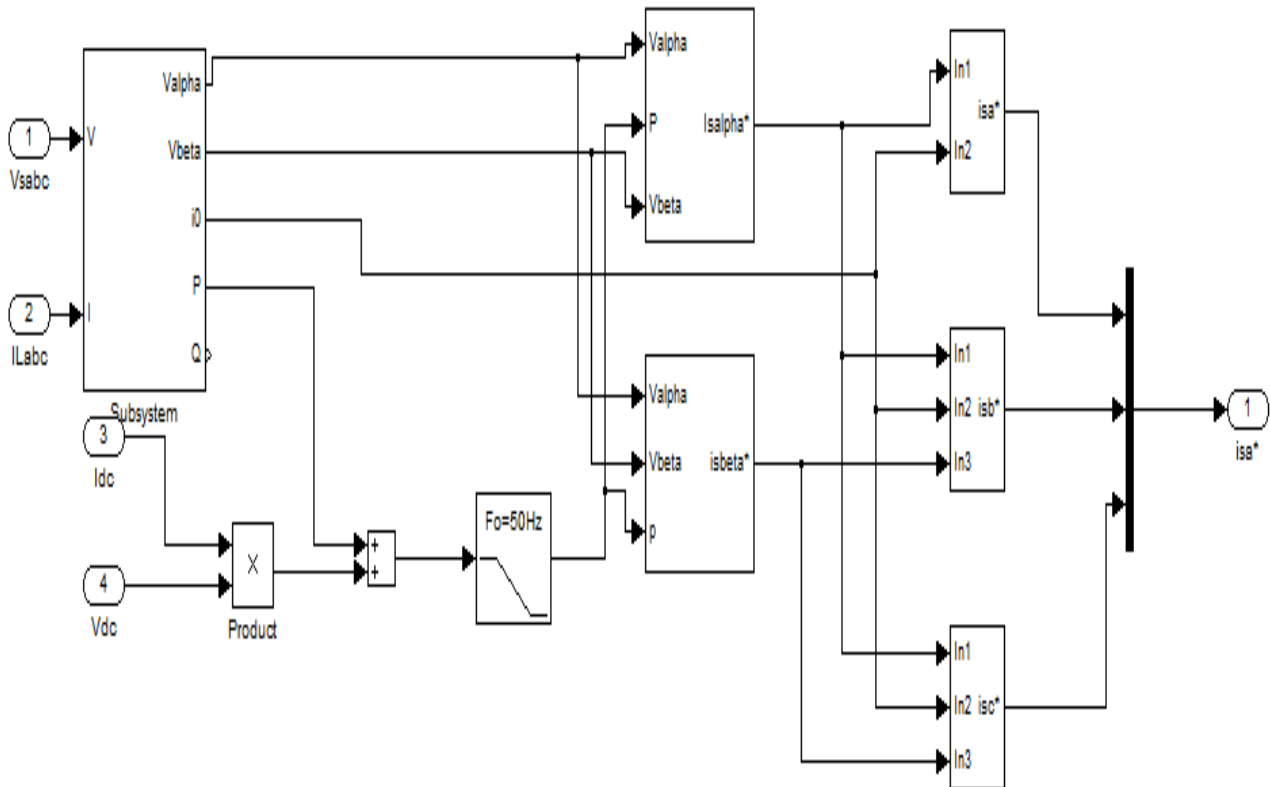
$$V_{s\alpha} = 23[v_{sa} - 12 v_{sb} - 12 v_{sc}] \dots\dots\dots \text{eq5}$$

$$V_{s\beta} = 12[ v_{sb} - v_{sc}] \dots\dots\dots \text{eq6}$$

The source side instantaneous real and imaginary power components are calculated by using source currents and phase-neutral voltages as given in eq7 and eq8.

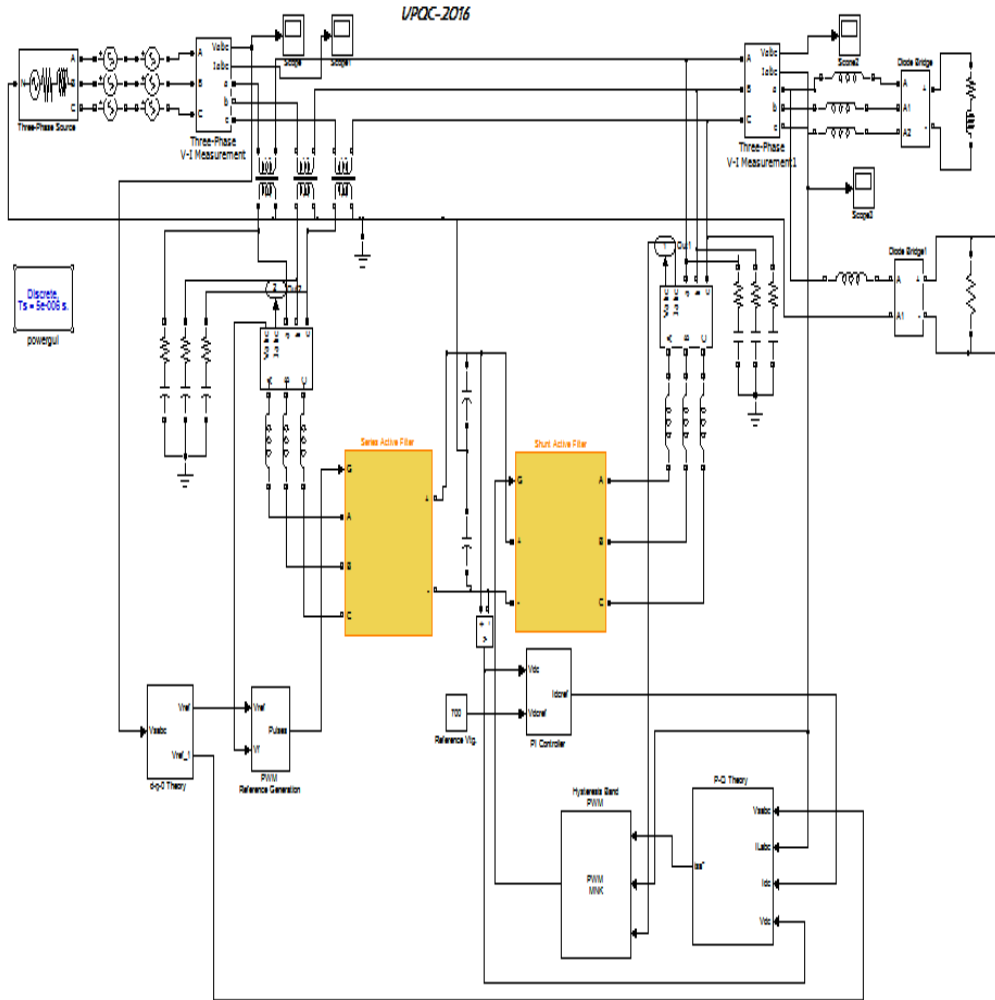
$$P = V_{s\alpha} I_{s\alpha} + V_{s\beta} I_{s\beta} \dots\dots\dots \text{eq7}$$

$$Q = -V_{s\beta} I_{s\alpha} + V_{s\alpha} I_{s\beta} \dots\dots\dots \text{eq8}$$



**Fig. 2 P-Q theory Simulation**

The instantaneous real and imaginary powers include both oscillating and average components. Average components of p and q consist of positive sequence components of source current. The oscillating components of p and q include harmonic and negative sequence components of source currents [2]. In order to reduce neutral current, p is calculated by using average and oscillating components of imaginary power and oscillating component of the real power. These currents are transformed to three-phase system as shown in The reference currents are calculated in order to compensate neutral, harmonic and reactive currents in the load. These reference source current signals are then compared with sensed three-phase source currents, and the errors are processed by hysteresis band PWM controller to generate the required switching signals for the shunt APF.



**Fig. 3 Simulation Circuit of UPQC**

**B. Series Control Strategy:**

The series active power filter is provided the voltage compensation. It generates the compensation voltage that synthesized by the PWM converter and inserted in series with the supply voltage, to force the voltage of PCC to become sinusoidal and balanced. supply voltages  $V_{sabc}$  are transformed to d-q-0 coordinates.

$$V_d = 2/3 [V_a \sin \omega t + V_b \sin(\omega t - 2\pi/3) + V_c \sin(\omega t + 2\pi/3)]$$

$$V_q = 2/3 [V_a \cos \omega t + V_b \cos(\omega t - 2\pi/3) + V_c \cos(\omega t + 2\pi/3)]$$

$$V_0 = 1/3 (V_a + V_b + V_c)$$

The voltage in d axes consists of average and oscillating components of source voltages. The average voltage is calculated by using second order LPF (low pass filter). The load side reference voltages are calculated. The switching signals are assessed by Comparing reference voltages and the load voltages and via sinusoidal PWM controller. Then d-q-0 are transformed to  $V_{sabc}$  coordinates

$$V_a = [V_d \sin \omega t + V_q \cos \omega t + V_0]$$

$$V_b = [V_d \sin(\omega t - 2\pi/3) + V_q \cos(\omega t - 2\pi/3) + V_0]$$

# International Journal of Advanced Research in Electrical, Electronics and Instrumentation Engineering

(An ISO 3297: 2007 Certified Organization)

Vol. 5, Issue 5, May 2016

$$V_c = [V_d \cdot \sin(\omega t + 2\pi/3) + V_q \cdot \cos(\omega t + 2\pi/3) + V_o]$$

These produced three-phase load reference voltages are compared with load line voltages and errors are then processed by sinusoidal PWM controller to generate the required switching signals for series APF IGBT switches.

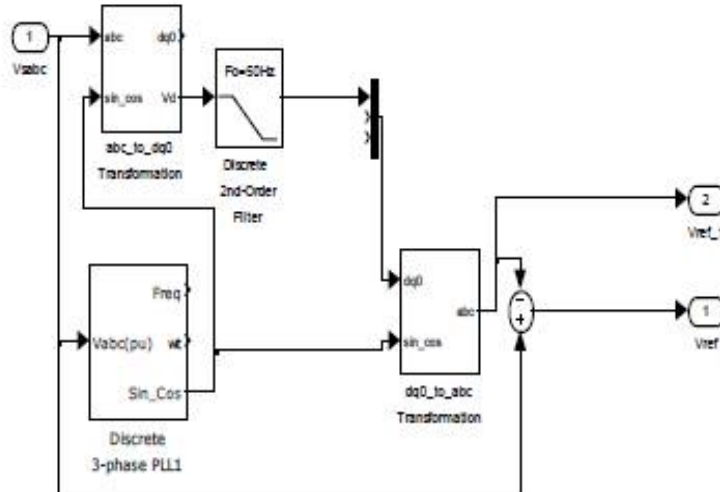


Fig. 4 D-Q-0 Theory Simulation

## IV. SIMULATION RESULTS

The harmonics and unbalanced components are compensated in case of unbalanced and distorted current and voltage at the PCC. Simulation results show that the proposed control strategy compensates harmonic components as well as most of the other unbalanced load current distortions. It is shown that the UPQC can compensate the voltage and current problems simultaneously. In this study, the proposed SRF-based control algorithm for the UPQC is evaluated by Matlab/Simulink software under Unbalanced and distorted load-current and source-voltage conditions. The UPQC system parameters used in this study are given in Table I.

	Parameters		Values
Source	Voltage	$V_{sabc}$	400 Vrms
	Frequency	F	50 Hz
Load	Three phase AC line Inductance	$L_{Labc}$	5mH
	Single phase AC line Inductance	$L_{La1}$	5mH
	Three phase DC Inductance	$L_{dc3}$	10mH
	Three phase DC line Resistance	$R_{dc3}$	30Ω
	Single phase DC line Capacitance	$C_{dc1}$	0.24μF
	Single phase DC line Resistance	$R_{dc1}$	90Ω
DC link	Voltage	$V_{DC}$	700V
	Two series Capacitor	$C_1, C_2$	2200μF
Shunt Active Filter	AC line Inductance	$L_{cabc}$	3mH
	Filter Resistance	$R_{cabc}$	5Ω
	Filter Capacitance	$C_{cabc}$	20μF
Series Active Filter	AC line Inductance	$L_{tabc}$	3mH
	Filter Resistance	$R_{tabc}$	5Ω
	Filter Capacitance	$C_{tabc}$	10μF
	Two series Transformer	S	1 KVA

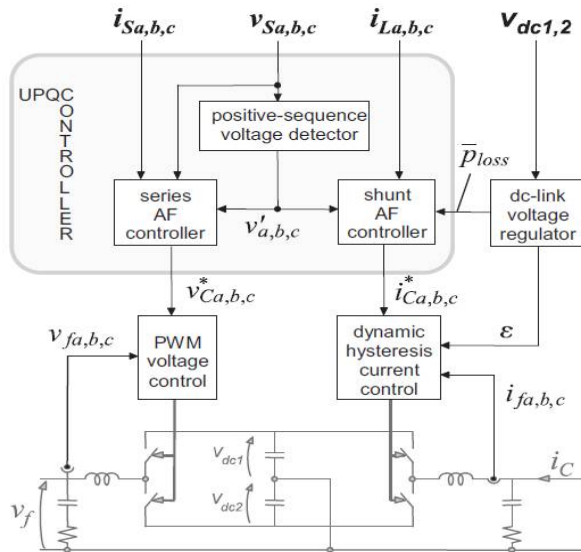
# International Journal of Advanced Research in Electrical, Electronics and Instrumentation Engineering

(An ISO 3297: 2007 Certified Organization)

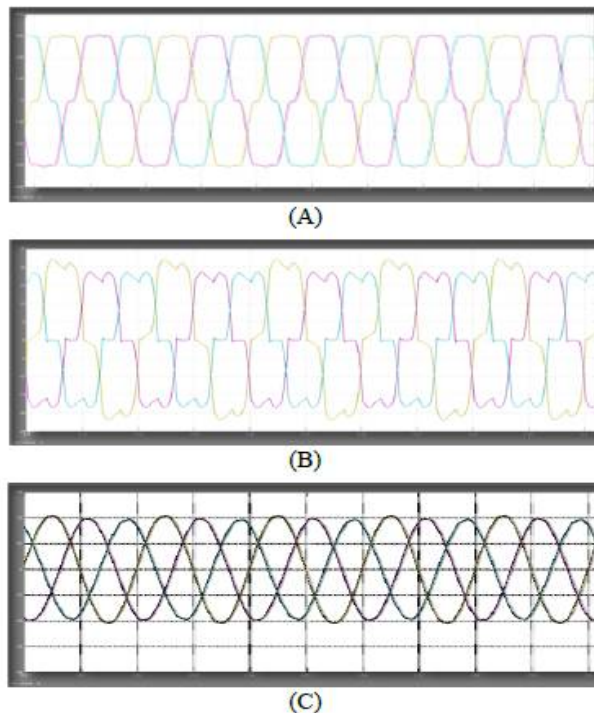
Vol. 5, Issue 5, May 2016

**TABLE 1 UPQC SIMULATION PARAMETERS**

In the simulation studies, the results are specified before and after the operation of the UPQC system. In addition, when the UPQC system was operated, the load



**Fig. 5 Functional block diagram of UPQC.**



**Fig. 6 Simulation Results for Operational Performance of the UPQC System (a) Source voltage ( $V_{abc}$ ), (b) Load current ( $I_{Labc}$ ), (c) Source current ( $I_{abc}$ ), (d) Load voltage ( $V_{Labc}$ ), (e) DC link Voltage ( $V_{DC}$ )**

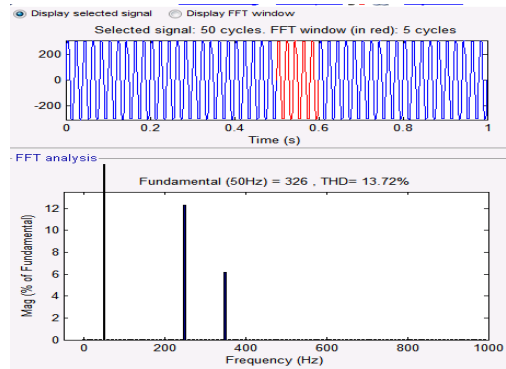


# International Journal of Advanced Research in Electrical, Electronics and Instrumentation Engineering

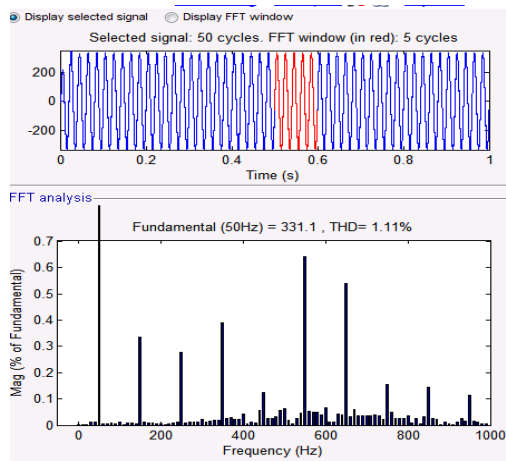
(An ISO 3297: 2007 Certified Organization)

Vol. 5, Issue 5, May 2016

Before harmonic compensation, the THD of the supply current is 19.33%. The obtained results show that the proposed control technique allows the 4.8% mitigation of all harmonic components as shown in fig. Before compensation, the THD level of the load voltage in phase a was 13.72% and the source current was 19.33%; after compensation, the THD level of the load voltage is approximately 0.99% and the source current is approximately 0.93%.



(a)



(b)

Fig. 7 Simulation Results for FFT Analysis of the UPQC System (a) Source voltage (b) Load voltage ( $V_{Labc}$ ),

## V. CONCLUSION

The UPQC system is successfully designed and modeled using the circuit elements of simulink. The simulation results show that, when unbalanced and nonlinear load current or unbalanced and distorted mains voltage conditions, the above control algorithms eliminate the impact of distortion and unbalance of load current on the power line, making the power factor unity. Meanwhile, the series APF isolates the loads voltages and source voltage, the shunt APF provides three-phase balanced and rated currents for the loads. The THD in the output is reduced by using UPQC. The scope of this work is the modeling and simulation of UPQC system. The hardware implementation is yet to be done. The simulation can be extended to multi bus system.



ISSN (Print) : 2320 – 3765  
ISSN (Online): 2278 – 8875

# International Journal of Advanced Research in Electrical, Electronics and Instrumentation Engineering

(An ISO 3297: 2007 Certified Organization)

Vol. 5, Issue 5, May 2016

## VI. FUTURE SCOPE

In the future, field work will concentrate on reliability of electric power, energy conservation, efficient energy use and maximum use of renewable energy sources. Further work can be carried out in the following areas:

- Performance comparison of available power quality detection and reference signal generation methods experimentally.
- This research can be extended to investigate the 3-phase 4-wire UPQC. Since the turn on/off instances of the inverter complementary switches are delayed by a blanking time, the voltage injected by the series compensator contains unwelcome low frequency harmonics. A special control technique has to be implemented for minimizing the undesirable effects of blanking time;
- The resonance at switching frequencies of the shunt filter capacitor with the feeder inductance is avoided by proper choice of switching frequency and introducing a small value damping resistor in series with the shunt filter capacitor. However, this solution requires additional hardware and causes additional losses. The resonance can also be avoided by applying an appropriate control action to the series compensator. Thus, some investigations in this direction are required.

## ACKNOWLEDGMENT

I am greatly indebted forever to my guide Mr. Naveen Kumar Mucha Asst. Professor Electrical Engineering Department, MSS's College of Engineering and Technology, Jalna for his continuous encouragement, support, ideas, most constructive suggestions, valuable advice and confidence in me. He gave me complete freedom to pursue all my interest and also provided so many exciting directions to explore.

I sincerely thank to all my faculty members of MSS's College of Engineering and Technology, Jalna for their continuous support.

I sincerely thank Dr. C.M. Sedani, Principal, MSS's College of Engineering and Technology, Jalna for their continuous encouragement and active interest in my progress that they gave throughout the work.

## REFERENCES

- [1] H. Akagi, E. H. Watanabe, and M. Aredes, "Instantaneous Power Theory and Applications to Power Conditioning". Hoboken, NJ: Wiley-IEEE Press, Apr. 2007..
- [2] Metin Kesler, Engin Ozdemir, "A Novel Control Method for Unified Power Quality Conditioner (UPQC) Under Non-Ideal Mains Voltage and Unbalanced Load Conditions", 978-1-4244-4783-1/10/2010
- [3] Metin Kesler and Engin Ozdemir, "Synchronous-Reference-Frame-Based Control Method for UPQC Under Unbalanced and Distorted Load Conditions", IEEE Trans. Industrial electronics, vol. 58, no. 9, September 2011
- [4] Vinod Khadkikar, Ambrish Chandra, "A New Control Philosophy for a Unified Power Quality Conditioner (UPQC) to Coordinate Load-Reactive Power Demand between Shunt and Series Inverters", IEEE trans. on power delivery, vol. 23, no. 4, October 2008 "PDCA12-70 data sheet," Opto Speed SA, Mezzovico, Switzerland.
- [5] P. Kannan, V. Rajamani, "Design, Modeling and Simulation of UPQC system with PV array", International Journal of Engineering Research & Technology (IJERT) Vol. 1 Issue 6, August – 2012 ISSN: 2278-0181.

## BIOGRAPHY



**Miss. Annpurna Hanuman Singh Yadav**, was received Bachelor of Engineering. degree in The Stream electrical engineering (EE) from L. D. engineering college, Gujarat University, Ahmedabad, and Pursuing Master degree in Electrical Power System (EPS) from the Matsyodari Shikashan Santha's College of Engineering and Technology Jalna. Dr. Baba Saheb Marathwada University, Aurangabad, Maharashtra.





ISSN (Print) : 2320 – 3765  
ISSN (Online): 2278 – 8875

## International Journal of Advanced Research in Electrical, Electronics and Instrumentation Engineering

*(An ISO 3297: 2007 Certified Organization)*

**Vol. 5, Issue 5, May 2016**



**Mr. Naveen Kumar Mucha**, was received M.Tech degree in Power System Controlling and Automation(PSCA) from the JITS college of engineering Warangal J.N.T.University, Hyderabad and B.Tech. degree in The Stream electrical & electronics engineering(EEE) from Sreekavitha engineering college, J.N.T.University, Hyderabad. Presently working as Asst.Professor in the Dept. of Electrical Engineering, From MSS's engineering college, jalna Maharashtra