



Detection, Classification and Location of Faults in Underground Cable by Wavelet Technique

D.Prabhavathi¹, Dr.M.Surya Kalavathi², K.Prakasam³

PhD Student, Department of EEE JNTUA Anantapur, A.P India¹

Professor, Department of EEE, JNTUCEH, JNTUH, Hyderabad, Telangana, India²

PhD Student, Department of EEE JNTUA Anantapur, A.P, India³

ABSTRACT: Electric power systems have rapidly grown for the past fifty years. Speedy and precise fault location plays an important role in accelerating system restoration, reducing outage time, reducing great financial loss and significantly improving system reliability. Therefore, this study presents a fault detection, classification and fault location estimation method based on Discrete Wavelet Transform for medium voltage 11kV underground cable. Different faults (Lg, LLg, LLLg) and at different locations 2km, 4km and 6km of 10km length are simulated by Mat Lab, and then certain selected features of the wavelet transformed signals are used as an input. From the results, it was found that the percentage error in wavelet Transform output is very less. Hence, it can be concluded that the proposed technique is able to offer high accuracy in both of the fault classification and fault location.

KEYWORDS: Cable, Discrete, Fault. Mat lab, Time arrival, Travelling, Sampling period, wavelet,

I.INTRODUCTION

Underground cables have been widely applied in power distribution networks due to the benefits of underground connection, involving more secure than overhead lines in bad weather, less liable to damage by storms or lightning, no susceptible to trees, less expensive for shorter distance, environment-friendly and low maintenance. However, the disadvantages of underground cables should also be mentioned, including 8 to 15 times more expensive than equivalent overhead lines, less power transfer capability, more liable to permanent damage following a flash-over, and difficult to locate fault. Faults in underground cables can be normally classified as two categories: incipient faults and permanent faults. Usually, incipient faults in power cables are gradually resulted from the aging process, where the localized deterioration in insulations exists. In several research papers, the fault classification or the phase with fault appearance can be obtained from employing trial and error method [1-3] or from the artificial intelligent decision algorithms [4-7]. However, most research works have only considered in the fault diagnosis for overhead transmission and distribution systems while research work rarely mention about the fault diagnosis in underground distribution system. The techniques to detect and determine the fault location in underground distribution system are discussed in several research papers [8-9] but the types of fault and the phase with fault appearance are as important as fault location. As a result, it is useful if the fault types in the underground distribution system can be identified using wavelet transform. Electrical overstress in conjunction with mechanical deficiency, unfavourable environmental condition and chemical pollution, can cause the irreparable and irreversible damages in insulations. Eventually, incipient faults would fail into permanent faults sooner or later. In this proposed work, taking into consideration of the requirement of a robust and highly efficient technique for fault identification and localization in high voltage underground power cable, a novel scheme has been proposed that ensures not only highly precise identification and localization accuracy but also provides an insight for its future utilization with real time power utilities. Further taking into consideration of the robustness of the wavelet transform technique [4-6], which has established as a robust approach for signal analysis in time as well as frequency domain, in paper Wavelet Transform (WT) approach is employed for fault detection, classification with fault current based [10-12] and the developed model has been tested for varied length (2km, 4km and 6km respectively) of power cables.



International Journal of Advanced Research in Electrical, Electronics and Instrumentation Engineering

(An ISO 3297: 2007 Certified Organization)

Vol. 5, Issue 2, February 2016

II. WAVELET TRANSFORM

A wavelet is a mathematical function used to divide a given function or continuous-time signal into different scale components. Usually one can assign a frequency range to each scale component. Each scale component can then be studied with a resolution that matches its scale. A wavelet transform is the representation of a function by wavelets. The wavelets are scaled and translated copies (known as "daughter wavelets") of a finite-length or fast-decaying oscillating waveform (known as the "mother wavelet"). Wavelet transforms have advantages over traditional Fourier transforms for representing functions that have discontinuities and sharp peaks, and for accurately deconstructing and reconstructing finite, non-periodic and/or non-stationary signals.

Wavelet transforms are classified into discrete wavelet transforms (DWTs) and continuous wavelet transforms (CWTs). In the wavelet transform we should note that both DWT and CWT are continuous-time (analog) transforms. They can be used to represent continuous-time (analog) signals. CWTs operate over every possible scale and translation whereas DWTs use a specific subset of scale and translation values or representation grid. There are a large number of wavelet transforms each suitable for different applications.

The wavelet transform can be accomplished in two different ways depending on what information is required out of this transformation process. The first method is a continuous wavelet transform (CWT), where one obtains a surface of wavelet Coefficients, $CWT(b,a)$, for different values of scaling 'a' and translation 'b', and the second is a Discrete Wavelet Transform (DWT), where the scale and translation are discretized, but not are independent variables of the original signal. In the CWT the variables 'a' and 'b' are continuous. DWT results in a finite number of wavelet coefficients depending upon the integer number of discretization step in scale and translation, denoted by 'm' and 'n'. If a_0 and b_0 are the segmentation step sizes for the scale and translation respectively, the scale and translation in terms of these parameters will be

$$a = a_0^m \text{ and } b = b_0 a_0^m \text{ --- (4)}$$

$$\psi_{b,a}(t) = 1/\sqrt{a}\psi(t - \frac{b}{a}) \text{ --- (5)}$$

The above presented equation represents the mother wavelet of continuous time wavelet series. After discretization in terms of the parameters, a_0 , b_0 , 'm' and 'n', the mother wavelet can be written as,

$$\psi_{b,a}(m,n) = \frac{1}{\sqrt{a_0^m} \Psi\left(t - \frac{nb_0 a_0^m}{a_0^m}\right)} \text{ --- (6)}$$

$$\psi_{b,a}(m,n) = a_0^{\frac{m}{2}} \psi(t a_0^{-m} - nb_0) \text{ --- (7)}$$

After discretization, the wavelet domain coefficients are no longer represented by a simple 'a' and 'b'. Instead they are represented in terms of 'm' and 'n'. The discrete wavelet coefficients DWT (m, n) are given by equation:

$$DWT(m,n) = a_0^{m/2} \int_{-\infty}^{+\infty} f(t)\psi(t a_0^{-m} - nb_0) dt \text{ --- (8)}$$

The transformation is over continuous time but the wavelets are the transformation is over continuous time but the wavelets are represented in a discrete fashion. Like the CWT, these discrete wavelet coefficients represent the correlation between the original signal and wavelet for different combinations of 'm' and 'n'. In this study, the line current signals are used as the input signals of the wavelet analysis. The DWT, using a Daubechies-4 wavelet (db4), performed better at identifying the start and end of a disturbance [1- 4]. The Daubechies wavelet is very well suited for identifying short-time, high frequency transients, as well as low frequency behavior over longer periods of time. In both cases the signals are non- periodic or non-stationary [5]. The fault transients of the study cases are analyzed through



International Journal of Advanced Research in Electrical, Electronics and Instrumentation Engineering

(An ISO 3297: 2007 Certified Organization)

Vol. 5, Issue 2, February 2016

discrete wavelet transform at levels one to five. Both approximation and details information related fault current are extracted from the original signal with the multi-resolution analysis.

III. FAULT DETECTION, CLASSIFICATION AND LOCATION

Fault classification identifies the type of fault on the fault lines in the system. There are different methods proposed for the fault classification. This section reviews wavelet based method. The wavelet based approach for fault classification is implemented using multi resolution analysis (MRA) of voltage and current signals [12-14]. MRA is the process of decomposing a signal into different levels of resolutions [1]. Initially, the signal is passed through two discrete wavelet transform (DWT) filters – high pass (HP) filter and low pass (LP) filter. The samples of output signal from the HP filter are known as detail coefficients, and those from the LP filter are known as approximated coefficients. This is considered the first level. Next, the obtained samples from LP filter (first level approximated coefficients) are further processed through HP and LP filters forming the second level. In this way, the original signal can be processed through many levels depending on the need of resolution of signal. Once fault classification is completed, the next step is to determine the fault location. The fault location identifies the position of fault in the power system. There is different method of fault location; however in this paper travelling wave theory method is implemented. The travelling wave theory based method uses the information of voltage and current travelling waves for locating the fault. At the point of fault location, voltage and current waveforms get suddenly disturbed. Such disturbance causes them to propagate through the power system. Based on the total length of the faulted line. Propagation velocity and time of waveforms, the location of fault is known. This technique is mostly used for extra high voltage transmission lines than distribution lines because distribution system contains many subsections such as laterals and feeders. These subsections may create disturbances for the travelling waves on the lines. Reference [15] explains fault location technique based on the traveling wave theory. It includes two methods – the single ended method and the double ended method. In the single ended method, only one fault locator is installed at one substation. Depending on the arrival time of waves at that substation, the location of the fault is estimated. In double ended method, there are two fault locators installed at two substations and depending on the arrival time of waves at both stations, the fault location is calculated

IV. SCHEME OF EVALUATION OF PROPOSED SYSTEM

In this paper travelling wave based approach is followed and performing the comparison of the transient signals at all phases in power cable model, the classification of fault can be made. If the transient signal appears at only one phase then the fault is single line to ground fault. In general, the generated transient signals caused due to the fault is found to be non-stationary and is of wide band of frequency, when fault occurs in the network, the generated transient signals travels in the network. On the arrival at a discontinuity position, the transient wave is in general reflected partly and the remainder is incident to the line impedance. The transient signals reflected from the end of the line travels back to the fault point where another reflection takes place due to the discontinuity of impedance. Here in this fault identification and localization scheme, in order to capture these transient signals the wavelet analysis approaches have been employed more precisely for wavelet analysis. The fault location can be carried out by comparing the aerial mode wavelet coefficient to determine the time instant when the energy of the signal reaches its peak value. The distance between the fault point and the bus of the faulted branch is in general stated by the following equation (1).

$$D = \frac{v \times t_d}{2} \text{-----(1)}$$

Where D represents the distance to the fault t_d refers for the time difference between two consecutive peaks of the wavelet transform coefficients of the recorded current and v is the wave propagation velocity in the aerial mode. An underground cable of length 50 km has been employed for fault analysis. The travelling wave velocity of the signals in the 11kV underground cable system is 1.9557×10^8 km/s, and sampling time of $10\mu s$ has been employed. The following figure represents the single line diagram of the simulated system with 11kv, 50Hz, 10km underground cable. To perform the system analysis, varied fault conditions such as LG, LLG and LLLG faults have been considered and associated detection parameters have been obtained. The performance has been evaluated in terms of % error and the deviation from the actual values. The overall process of fault detection and location has been accomplished. Consider a three phase cable line of length X connected between bus A and bus B, with characteristic impedance Z_c and travelling

International Journal of Advanced Research in Electrical, Electronics and Instrumentation Engineering

(An ISO 3297: 2007 Certified Organization)

Vol. 5, Issue 2, February 2016

wave velocity of v . In this simulation model it has been found that if a fault occurs at a distance x_2 from bus A, this will appear as an abrupt injection at the fault point. This injection will travel like a wave "surge" along the line in both directions and will continue to bounce back and forth between fault point, and the two terminal buses until the post-fault steady state is reached. The distance to the fault point can be calculated b_{xx} using travelling wave theory. Let t_1 and t_2 corresponds to the times at which the modal signals wavelet coefficients in scale1, show their initial peaks for signals recorder at bus A and bus B. the delay between the fault detection times at the two ends is $t_1 - t_2$ can be determined. Once the parameter t_{xx} is determined, the fault location from bus A can be estimated as per the following expression (2).

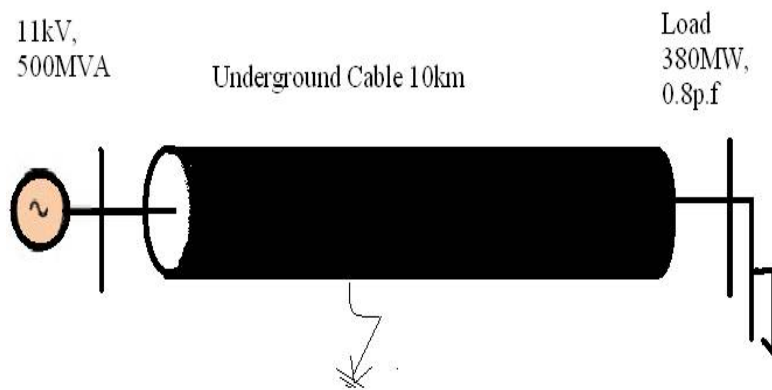


Figure 1. Single line diagram of the proposed system

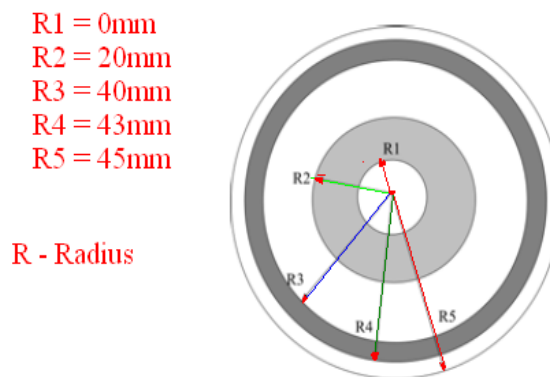


Figure 2. Configuration of underground cable

$$X_2 = X - \frac{(t_1 - t_2)v}{2} \text{ ----- (2)}$$

Or the fault location can be calculated from bus B as follows expression (3)

$$X_1 = X - \frac{(t_2 - t_1)v}{2} \text{ ----- (3)}$$

The travelling wave velocity can be obtained from the equation as follows (4)

$$v = \frac{3 \times 10^8}{\sqrt{\epsilon_r \mu_r}} \text{ m/s ----- (4)}$$

International Journal of Advanced Research in Electrical, Electronics and Instrumentation Engineering

(An ISO 3297: 2007 Certified Organization)

Vol. 5, Issue 2, February 2016

Here the travelling wave velocity, v shown in equation (4) is assumed to be 1.9557×10^5 km/s, with sampling time of 10 μ s and the total line length 10km. in the above mathematical model the variable X_1 and X_2 represents the distance to the fault, t_d is the time difference between two consecutive peaks of the wavelet transforms coefficients of the recorded current and v is the wave propagation velocity.

V. RESULT AND DISCUSSION

The parameters of the proposed system are as follows Source: $V_L = 11$ kV, $f=50$ Hz, $X_s:R_s=10$, $X_s=2\Omega$, $R_s=0.2\Omega$ Cables: XLPE, Three-phase cable, Transformer: S=1 MVA Winding 1 : $V_L=11$ kV, $R_p=1 \Omega$, $L_p=28.6$ mH Winding 2 : $V_L = 380$ V, $R_s=0.00044 \Omega$, $L_s=0.0114$ mH Load 1: Three-phase static Load: $V_L=380$ Vrms, $f=50$ Hz, $P_L=92.62$ kW, $Q_L=69.252$ kVAR Load 2: The combination of a three-phase static and dynamic loads Dynamic Load: $V_L = 380$ Vrms, $f=50$ Hz, $P=200$ HP, Static Load: $P_L=92.62$ kW, $Q_L=69.252$ kVAR, $V_L = 380$ Vrms Load 3: Three-phase static Load: $V_L=11$ kVrms, $f=50$ Hz, $P_L=124$ kW, $Q_L=952$ kVAR. From the simulation results it was observed that , under normal working condition the maximum current is 0.96kA, however due to faults it is 1.789kA (Lg), 1.8255kA(LLg) and 2.212kA(LLLg) respectively. Similarly from the results it was observed that the first peak time is at $t_1 = 0.04002$ at a peak of 79257 and $t_2 = 0.040189$ at a peak value of 142472. The figure 1 shows the overall flowchart of the proposed algorithm for detection, classification and location of the fault of the proposed system.

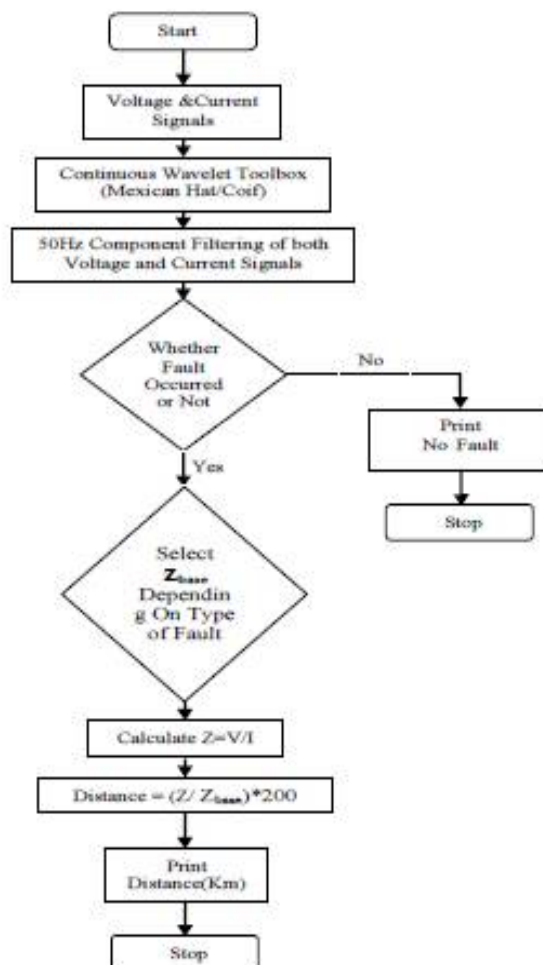


Fig.3.The overall flowchart of the proposed algorithm

International Journal of Advanced Research in Electrical, Electronics and Instrumentation Engineering

(An ISO 3297: 2007 Certified Organization)

Vol. 5, Issue 2, February 2016

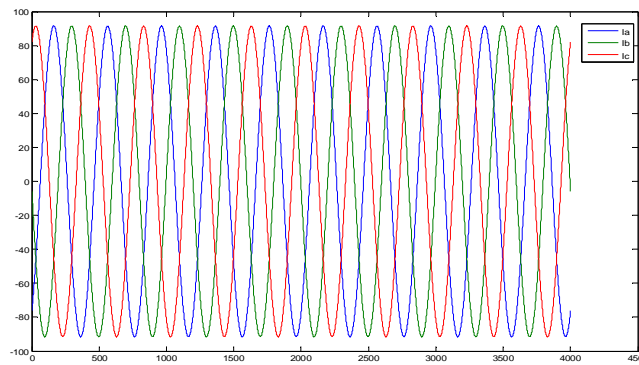
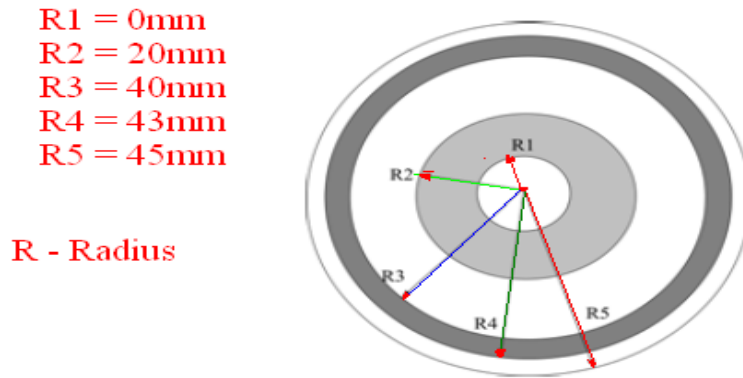


Fig.2 Three phase current response at normal rerunning condition

In the fig 2. It shows the graph of three phase current Vs time and from the graph it can be observed that, three phase sinusoidal wave form is undistorted and it indicates that the system is running under normal conditions without any faults.

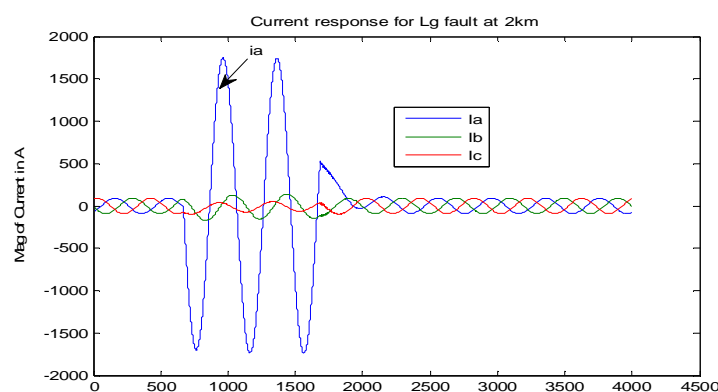


Fig3. Current response for Lg fault at 2km

In the fig 3, it shows the graph of fault current Vs time and from the figure it can be observed that there is a single line to ground fault and rise of fault current level of more than 1.5kA.

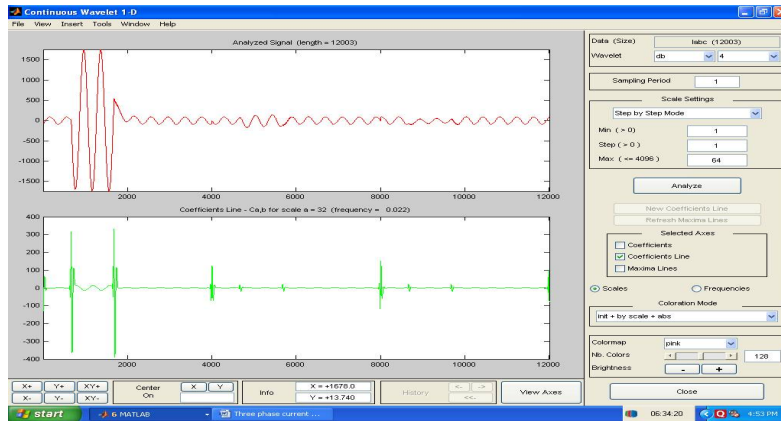


Fig4. Current response for Lg fault at 2km by wavelet Db4

In fig 4. It show that fault current with wavelet transform (Db4) for single line to ground fault in at level 4.

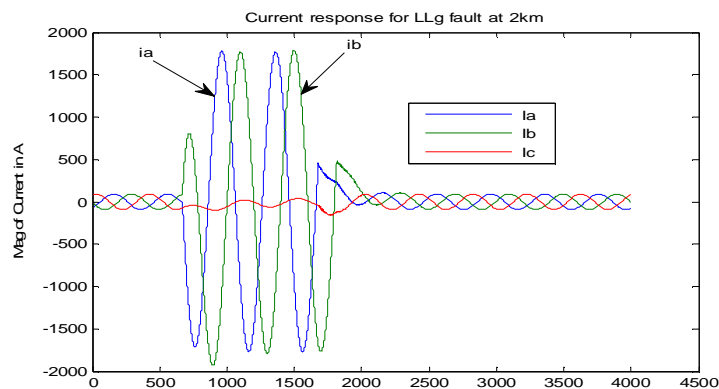


Fig5. Current response for LLg fault at 2km

In the fig 3, it shows the graph of fault curren Vs time and from the figure it can be observed that there is a double line to ground fault and rise of fault current level of more than 1.8kA.

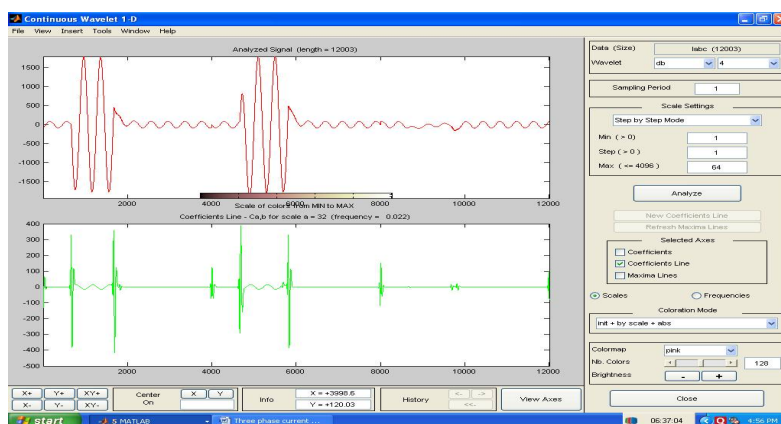


Fig6. Current response for LLg fault at 2km by wavelet Db4

In fig 6. It show that fault current with wavelet transform (Db4) for double line to ground fault in at level 4.

International Journal of Advanced Research in Electrical, Electronics and Instrumentation Engineering

(An ISO 3297: 2007 Certified Organization)

Vol. 5, Issue 2, February 2016

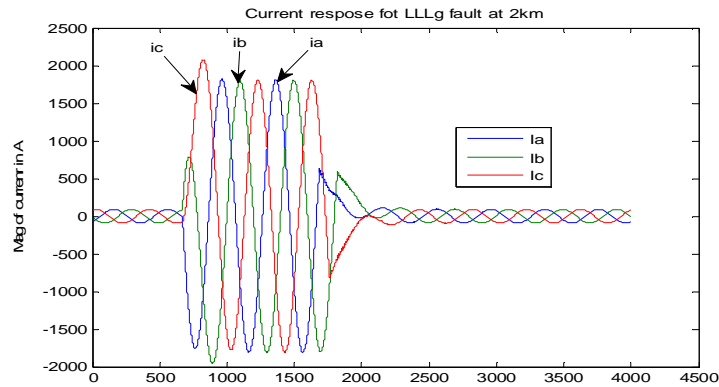


Fig7. Current response for LLLg fault at 2km

In the fig 7, it shows the graph of fault current Vs time and from the figure it can be observed that there is a triple line to ground fault and rise of fault current level of more than 2kA .

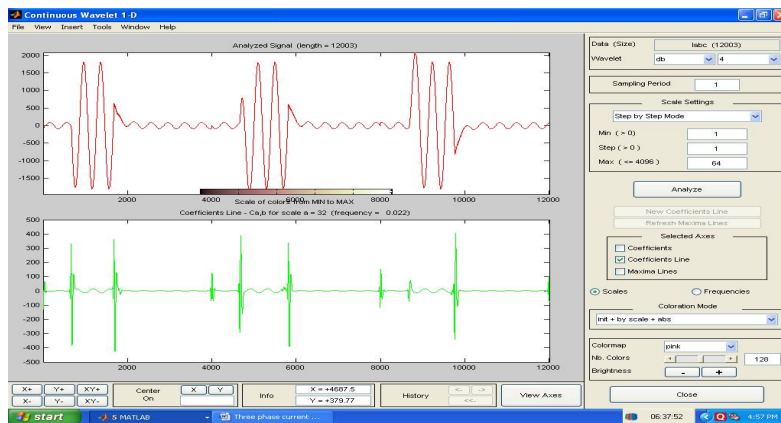


Fig8. Current response for LLLg fault at 2km by wavelet Db4

In fig 8. It show that fault current with wavelet transform (Db4) for triple line to ground fault in at level 4.

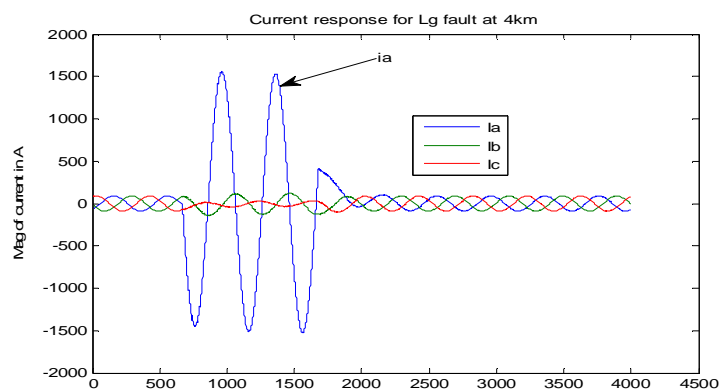


Fig 9. Current response for Lg fault at 4km

International Journal of Advanced Research in Electrical, Electronics and Instrumentation Engineering

(An ISO 3297: 2007 Certified Organization)

Vol. 5, Issue 2, February 2016

In the fig 7, it shows the graph of fault current Vs time and from the figure it can be observed that there is a single line to ground fault and rise of fault current level of more than 1.5kA but it is somewhat less than for fault at 2km. (IfLg for 4km < g of 2km).

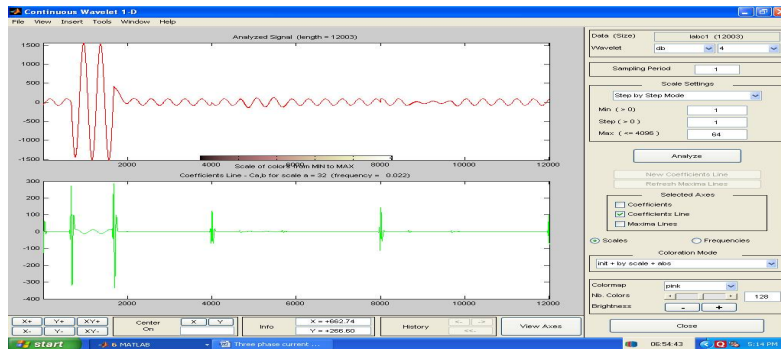


Fig 10. Current response for Lg fault at 4km by wavelet Db4

In fig 10. It show that fault current with wavelet transform (Db4) for single line to ground fault in at level 4.

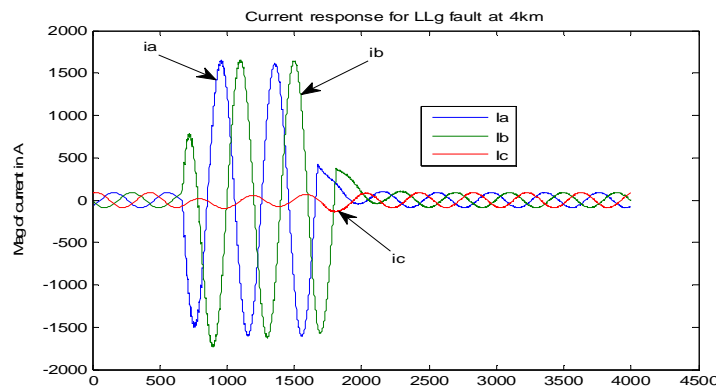


Fig11. Current response for LLg fault at 4km

In the fig 11, it shows the graph of fault current Vs time and from the figure it can be observed that there is a double line to ground fault and rise of fault current level of more than 1.5 kA but it is less than that of magnitude of fault current for single line to ground fault of length 2km. (IfLLg of 4km or f4 km < IfLg of 2km)

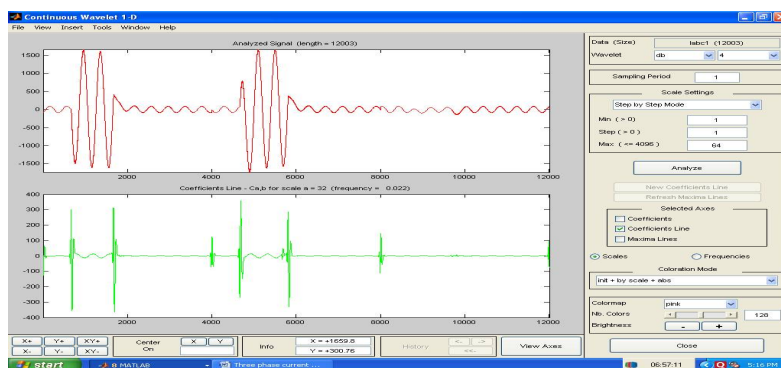


Fig12. Current response for LLg fault at 4km by wavelet Db4

International Journal of Advanced Research in Electrical, Electronics and Instrumentation Engineering

(An ISO 3297: 2007 Certified Organization)

Vol. 5, Issue 2, February 2016

In fig 12. It show that fault current with wavelet transform (Db4) for double line to ground fault in at level 4.

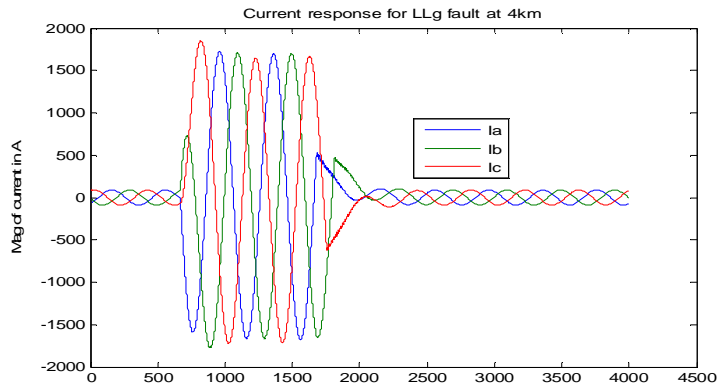


Fig 13. Current response for LLLg fault at 4km

In the fig 13, it shows the graph of fault current Vs time and from the figure it can be observed that there is a triple line to ground fault and rise of fault current level of more than 1.5 kA but it is less than that of magnitude of fault current for triple line to ground fault of 2km length (If LLLg of 4km < IFLLg of 2km)

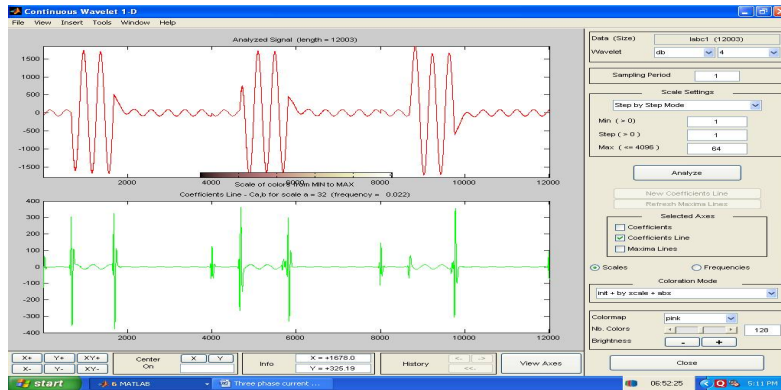


Fig 14. Current response for LLLg fault at 4km by wavelet Db4

In fig 12. It show that fault current with wavelet transform (Db4) for triple line to ground fault in at level 4.

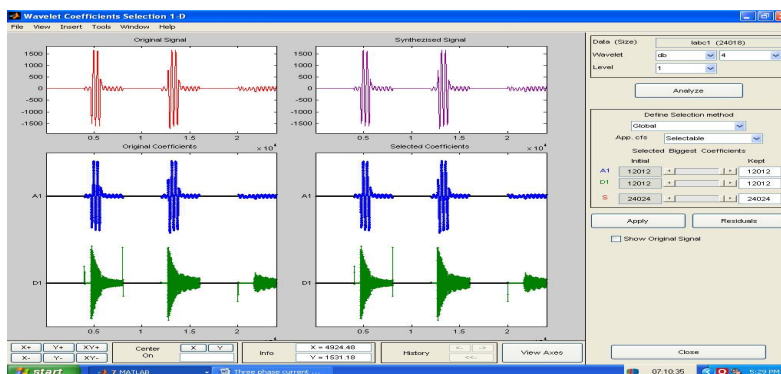


Fig 15. Wavelet coefficients of level 5

International Journal of Advanced Research in Electrical, Electronics and Instrumentation Engineering

(An ISO 3297: 2007 Certified Organization)

Vol. 5, Issue 2, February 2016

In fig 15. It shows the original single and sythezised signals in the range of -1500 to +1500 along with original coefficients and selected coefficients D₁ D₂ D₃ D₄ D₅ A₅ level 5.

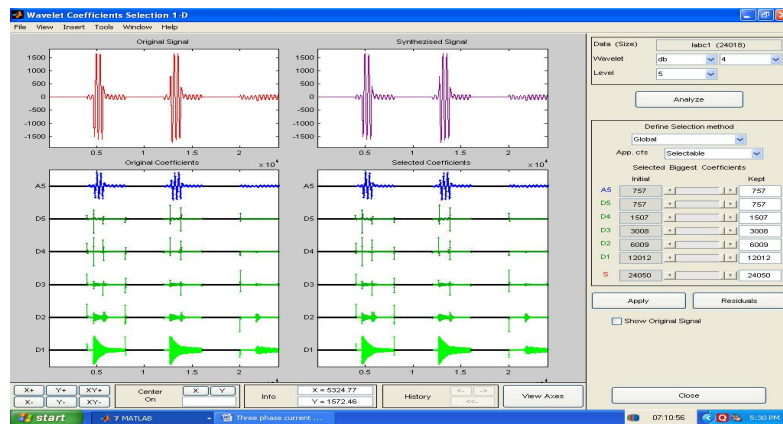


Fig16. Wavelet coefficients of level 1

In fig 16. It show the original single and sythezised signals in the range of -1500 to +1500 along with original coefficients and selected coefficients D₁ D₂ D₃ D₄ D₅ A₅ at level 1.

Table1. Percentage of error calculated by Impedance method

Actial Distance(km)	Calculated Distance(km)	% Error(km)
2	2.29	2.9
4	4.51	5.1
6	6.32	3.2

Table2. Percentage of error for single line to ground fault at different locations

Actual Distance (km)	First Peak Time(ms)		Proposed Technique(Db4) (km)	
	t ₁ (ms)	t ₂ (ms)	Calculated(km)	Error(km)
2	0.042	0.049	2.129	0.129
4	0.0405	0.04013	4.136	0.136
6	0.0407	0.04015	6.198	0.196

VI.CONCLUSION

In this paper at first, a new method to analyze power distribution system transient signals based-Mat Lab version 7.8 is proposed by using WT technique. This method offers important advantages over other methods such as FFT and STFT due to good time and frequency localization characteristics. Analysis results presented clearly show that particular wavelet components can be used as the features to locate the fault in underground cables in distribution system. This Study shows that the scheme is insensitive to fault type, and fault position on the cable. Studies also show that the wavelet technique is able to offer a very high accuracy in fault detection and fault location on underground cable. The simulation work carried for different faults single line to ground (Lg). Double line to ground (LLg) and three phase to ground(LLLg) at different points 2km,4km and 6km from the source end and the simulation results are shown in figures from 2 to figure 14, figure 15 and 16 shows the wavelet coefficients for level1 and 5. As a result, the application



International Journal of Advanced Research in Electrical, Electronics and Instrumentation Engineering

(An ISO 3297: 2007 Certified Organization)

Vol. 5, Issue 2, February 2016

of the discrete wavelet transform (DWT) based on traveling wave is a good choice to detect the fault in underground power cable.

REFERENCES

1. P. M. Silveira, R. Seara and H. H. Zurn, "An Approach Using Wavelet transforms for Fault Type Identification in Digital Relaying,." IEEE Power Engineering Society Summer Meeting Vol. 2, July, pp. 937-942. 1999.
2. Y. H. Gu and M. H. J. Bollen, "Time-frequency and time- scale domain analysis of voltage disturbances," Power Delivery, IEEE Transactions on, vol. 15, pp. 1279- 1284, 2000.
3. P. Makming, S. Bunjongjit, A. Kunakorn, S. Jiriwibhakorn and M. Kando 'Fault diagnosis in transmission lines using wavelet transforms' IEEE Transmission and Distribution Conference, Yokohama, Japan, pp. 2246-2250. October 2002.A. Ferrero, S. Sangiovanni and E. Zappitelli, "A Fuzzy-set approach to fault-type identification in digital relaying,." IEEE Transaction on Power Delivery, Vol. 10, No. 1, pp. 169-175. January 1995.
4. K. Chul Hwan and A. Raj, "Wavelet transforms in power systems. I. General introduction to the wavelet transforms," Power Engineering Journal [see also Power Engineer], vol. 14, pp. 81-87, 2000.
5. Magnago, F.H., Abur, A., "Fault Location using wavelets", IEEE Transactions on Power Deleivery, Vol.13, No.4, Page(s): 1475-1480, 1998
6. C.K. Jung, J.B. Lee, X.H. Wang, Y.H. Song "Wavelet based noise cancellation technique for fault location on underground power cables" EPSR, 77, pp. 1349-1362, 2007.
7. C. Apisit and A. Ngaopitakkul, "Identification of Fault Types for Underground Cable using Discrete Wavelet transform" Proceedings of The International MultiConference of Engineers and Computer Scientists 2010, pp.1262-1266,
8. 2010.
9. El Sayed Tag El Din, Mahmoud Gilany, Mohamed Mamdouh Abdel Aziz, Doaa khalil Ibrahim "A wavelet base fault location technique for aged power cables" in IEEE Power Engineering Society, Vol.3, pp.2485-2491, 12-16 June 2005.
10. M.S. Choi, D.S. Lee, and X. Yang, "A line to ground fault location algorithm for underground cable system," KIEE International Transactions on Power Engineering, Vol. 54, pp. 267-273, Jun. 2005.
11. M.Mirzaei, M.Z. A Ab Kadir, E.Moazami, H.Hizam, "Review of fault location methods for distribution power system", Australian Journal of Basic and Applied Sciences, 3(3), pp, 2670-2676, 2009.
12. M. Jaya Bharata Reddy, D. Venkata Rajesh, D.K. Mohanta, "Robust transmission line fault classification using wavelet multi-resolution analysis.", computers & Electrical Engineering, Volume 39, Issue 4, pp.1219-1247. 2001
13. Lei Ye, Dahai You, Xiangen Yin, Ke Wang, Junchun Wu," An improved fault-location method for distribution system using wavelets and support vector regression ", International Journal of Electrical Power & Energy Systems, Volume 55, pp. 467-472 ,2004.

BIOGRAPHY



D.Prabhavathi Born in 1976 August 27, her B.Tech degree from K.S.R.M College of Engineering, Kadapa , S.V University, and M.Tech degree from S.V university in the year 2003.She has specialized in Power Systems, High Voltage Engineering. Her research interests include Simulation studies on faults identification in UG cable of LT and HT. Fuzzy logic, High Voltage Engineering, Power Quality, FACTS Controllers; she has 16 years of experience. She has guided 21 M.Tech Projects and 54 Batch projects in various areas of engineering.



2) Dr. M. Surya Kalavathi, Born on 8th July 1966, Obtained her B.Tech degree from S.V. U. in 1988 and M.Tech from S.V.U. in the year 1992. Obtained her doctoral degree from J.N.T.U, Hyderabad and Post Doctoral from CMU, USA. She is presently the Professor in the department of EEE, J.N.T.U.H College of Engineering J.N.T.U.H, Kukatpally, Hyderabad. Published many Research Papers inter national and national journals as well as international and national conferences and presently guiding many Ph.D. Scholars. She has specialized in Power Systems, High Voltage Engineering and Control Systems. Her research interests include Simulation studies on Transients of different power system equipment. She has 26 years of experience. She has invited for various lectures in repudiated institutes in and around Andhra Pradesh and Telangana colleges.



3) K.Prakasam, Born in 1973 April 20, his B.Tech degree from KSRM College of Engineering SV university in 1997 and M.Tech degree from SV university in the year 2004. He has specialised in Power Systems, High Voltage Engineering and Control Systems. His research interests include Simulation studies on Transients of different power system equipment. He has 18 years of experience