



# **Line To Line Fault Location Identification Technique Incorporating Post Fault Current**

Achu S<sup>1</sup>, Emil Ninan Skariah<sup>2</sup>

PG Student [PS], Dept. of EEE, SAINTGITS College of Engineering, Kottayam, Kerala, India<sup>1</sup>

Assistant Professor, Dept. of EEE, SAINTGITS College of Engineering, Kottayam, Kerala, India<sup>2</sup>

**ABSTRACT:** In the interconnected transmission networks, the fault current is fed by several sources and its direction depends on the fault place and is not fixed. The need for directional relaying in distribution networks has been raised due to the emergence of distributed generation (DG) units. The application of voltage as a reference quantity for the detection of fault direction is a common practice in transmission lines. Nevertheless, this approach is not applicable in distribution networks due to the absence of potential transformers. So a novel directional relaying scheme is introduced which is able to detect the fault location using only the postfault current. Also an algorithm based on both pre fault and post fault currents are used to calculate distance of fault location during L-L fault.

**KEYWORDS:** Distributed generation, Fast Fourier Transform, Forward fault, line – line fault, Phase angle, Postfault current, Reverse fault.

## **I. INTRODUCTION**

When the Electricity Supply Industry (ESI) began its activity the need for electric energy in a place was, in general, satisfied by municipal companies that installed generators located according to the distribution needs.. Later on, the increasing electricity demand was satisfied installing huge generation plants, generally near the primary energy sources (e.g. coal mines, rivers, etc.). The great efficiency difference between one big generation plant and a small one, summing up the fact that the reserve margin that had to be taken in the first case was less than if the same power was installed in a distributed way, gave as a result the traditional conception of the Electrical Power Systems (EPS). Today there are technologies that allow generation using relatively small sized plants with respect to conventional generation, and with smaller costs per MW generated. Interconnecting distributed generation (DG) to an existing distribution system provides various benefits to several entities as for example the owner, utility and the final user. DG provides an enhanced power quality, higher reliability of the distribution system and can peak shaves and fill valleys. However, the integration of DG into existing networks has associated several technical, economical and regulatory questions. Penetration of a DG into an existing distribution system has many impacts on the system, with the power system protection being one of the major issues. DG causes the system to lose its radial power flow, besides the increased fault level of the system caused by the interconnection of the DG. Short circuit power of a distribution system changes when its state changes. Short circuit power also changes when some of the generators in the distribution system are disconnected. This may result in elongation of fault clearing time and hence disconnection of equipments in the distribution system or unnecessary operation of protective devices.

In this paper, a new protection philosophy based on postfault current is presented. All schemes present nowadays for detection of power flow direction depends on line voltage. Therefore, their application may be costly in non-radial distribution systems. So a new protection philosophy is required to cope with bi-directional power flows and unwanted tripping. So a new scheme for fault detection based on the postfault current can be considered. By avoiding the use of voltage or pre-fault current for detection of fault direction, we are able to resolve the problems in existing methods. Moreover, the proposed scheme can be used in transmission and distribution networks.

# International Journal of Advanced Research in Electrical, Electronics and Instrumentation Engineering

(An ISO 3297: 2007 Certified Organization)

Vol. 4, Issue 10, October 2015

## II.SYSTEM MODEL

A 33-kV system including three buses is considered with the system parameters as given in Table 1. In this system, which is shown in fig 1, source A is an equivalent model of the utility grid. Moreover, source C represents an equivalent model of a microgrid which consists of a collection of DG units. F1 and F2 are faults located at the middle

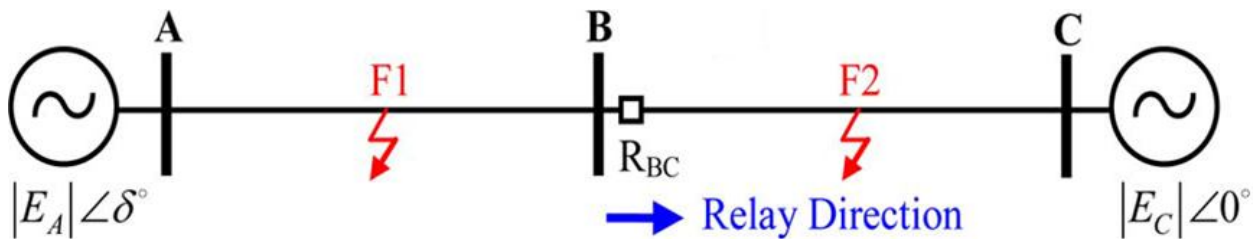


Fig. 1 System Model

of lines AB and BC, respectively. The sampling rate used in the simulation studies is 20samples/cycle.  $R_{BC}$  is a relay whose direction of operation is shown in fig 1.

TABLE 1  
System Parameters.

PARAMETER	Value	Unit
System voltage	33	kV
System frequency	50	Hz
Length of line AB	10	Km
Length of line BC	12	Km
Positive seq. impedance of the lines	$0.106 + j0.115$	$\Omega/\text{km}$
Zero seq. impedance of the lines	$0.502 + j0.321$	$\Omega/\text{km}$
Positive seq. impedance of the sources	$0.038 + j1.86$	$\Omega$
Zero seq. impedance of the sources	$0.051 + j2.15$	$\Omega$

## III. PROPOSED SCHEME

In this scheme, the phase current in each phase is obtained using a data acquisition technique. During normal operation this process of data acquisition continues in a regular interval. Whenever a fault occurs, both positive and negative derivative of post fault current are calculated. Also a reference current value is calculated based on the phase values of both forward and reverse currents. The difference between the angles of reference current and postfault current is used for determining the direction of fault current. If this value is positive, the fault is in the forward direction of relay and if the value is negative, the fault is in the reverse direction of the relay. This method for fault direction detection based on postfault current can be used for both bidirectional power flow systems with distributed generations.

# International Journal of Advanced Research in Electrical, Electronics and Instrumentation Engineering

(An ISO 3297: 2007 Certified Organization)

Vol. 4, Issue 10, October 2015

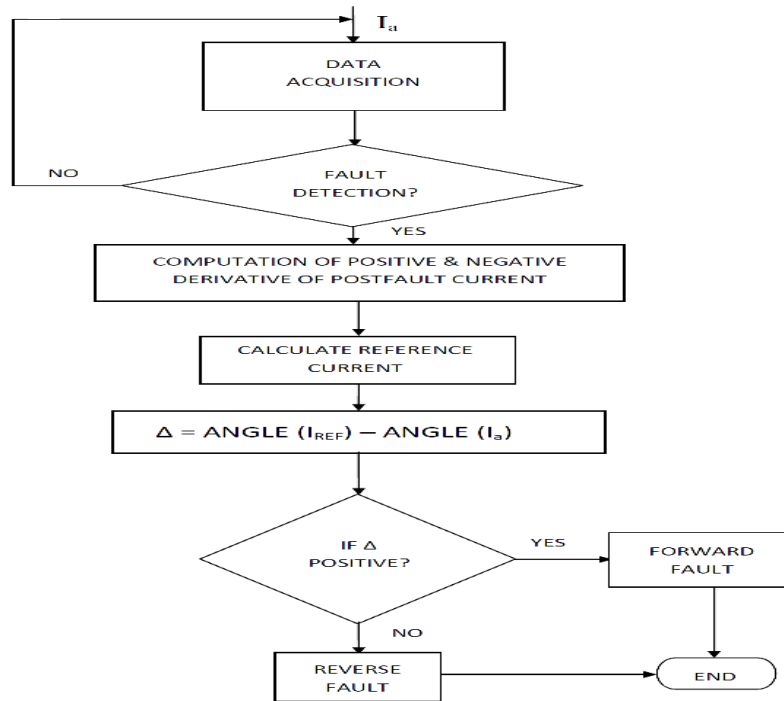


Fig. 2 Flow Chart

## IV. ALGORITHM FOR DISTANCE CALCULATION

For the case of line to ground fault, input parameters used for fault distance calculation are phase current phasors along with zero sequence impedance of line. Voltage phasor is not used as an input data. Fast Fourier transform(FFT) is used for calculating pre and postfault phasors. Given a phase-to-phase short circuit on the transmission line, the following complex equation is utilized in calculating the fault distance:

$$\bar{V} = [\bar{z} \bar{I} + (z_0 - \bar{z}) \bar{I}_0] l + 3R \bar{J}_0$$

where  $\bar{V}$  and  $\bar{I}$  are the input voltage and current phasors to the faulted phase relays,  $\bar{I}_0$  is the input zero sequence current to faulted phase relays,  $\bar{J}_0$  is the zero sequence current at fault location,  $\bar{z}$  and  $z_0$  are the positive and the zero sequence line impedances per unit length,  $l$  is per unit distance from source to fault and  $R$  is the total fault resistance. Zero sequence current at fault location,  $\bar{J}_0$  is not measurable, but it can be expressed in terms of the input zero sequence current,  $\bar{I}_0$  and parameters from the zero sequence equivalent circuit of the analysed network. By using the circuit theory, the system model can be replaced with the equivalent star circuit. The fault distance can be also determined by using only positive and negative parameters, thereby avoiding the utilization of uncertain zero sequence line parameters. Here the prefault load current phasor is required as an input value, whereas the use of undesirable zero sequence impedance line parameter is avoided.

For the line to line short circuits, the positive sequence current is equal to the negative sequence current ( $\bar{I}_d = \bar{I}_l$ ).

$$l = \frac{(\bar{I}_d - \bar{I}_L) \bar{Z}_{de} (Z_{i2} + \bar{z} D) - \bar{I}_l \bar{Z}_{ie} (\bar{Z}_{d2} + \bar{z} D)}{(\bar{I}_d - \bar{I}_L) \bar{Z}_{de} \bar{z} - \bar{I}_l \bar{Z}_{ie} \bar{z}}$$

where  $\bar{Z}_{d1}$  and  $\bar{Z}_{d2}$  are the impedances of the equivalent star circuit,  $\bar{Z}_{i1}$  and  $\bar{Z}_{i2}$  are the negative sequence impedances,  $\bar{I}_d$  is the input positive sequence current to faulted phase relays,  $\bar{I}_L$  is the prefault load current,  $\bar{I}_l$  is the positive sequence current at fault location,  $\bar{I}_l$  is the input negative sequence current to faulted phase relays,  $D$  is the line length,  $\bar{Z}_{de} = \bar{Z}_{d1} + \bar{Z}_{d2} + \bar{z} D$ ,  $\bar{Z}_{ie} = \bar{Z}_{i1} + \bar{Z}_{i2} + \bar{z} D$ .

# International Journal of Advanced Research in Electrical, Electronics and Instrumentation Engineering

(An ISO 3297: 2007 Certified Organization)

Vol. 4, Issue 10, October 2015

## V. RESULTS AND DISCUSSION

TABLE 2  
Effect of Power Flow Direction.

POWER FLOW	FAULT TYPE	FAULT LOCATION	$\theta_1$ (Rad)	$\theta_{ref}$ (Rad)	$\theta_{\Delta}$ (Rad)	FAULT DIRECTION
Forward	AB	F2	0.002	1.572	+1.57	Forward
Forward	AB	F1	3.249	1.679	-1.57	Reverse
Reverse	AB	F2	0.04	1.61	+1.57	Forward
Reverse	AB	F1	3.16	1.59	-1.57	Reverse

The results in table 2 shows that the angles of  $I_{Postfault}$  and  $I_{Ref}$  are varied, based on the change in power flow direction. But the value of  $\theta_{\Delta}$  is not affected by change in power flow. For both forward and reverse power flow,  $\theta_{\Delta}$  is +1.57rad in forward faults and -1.57rad in reverse faults.

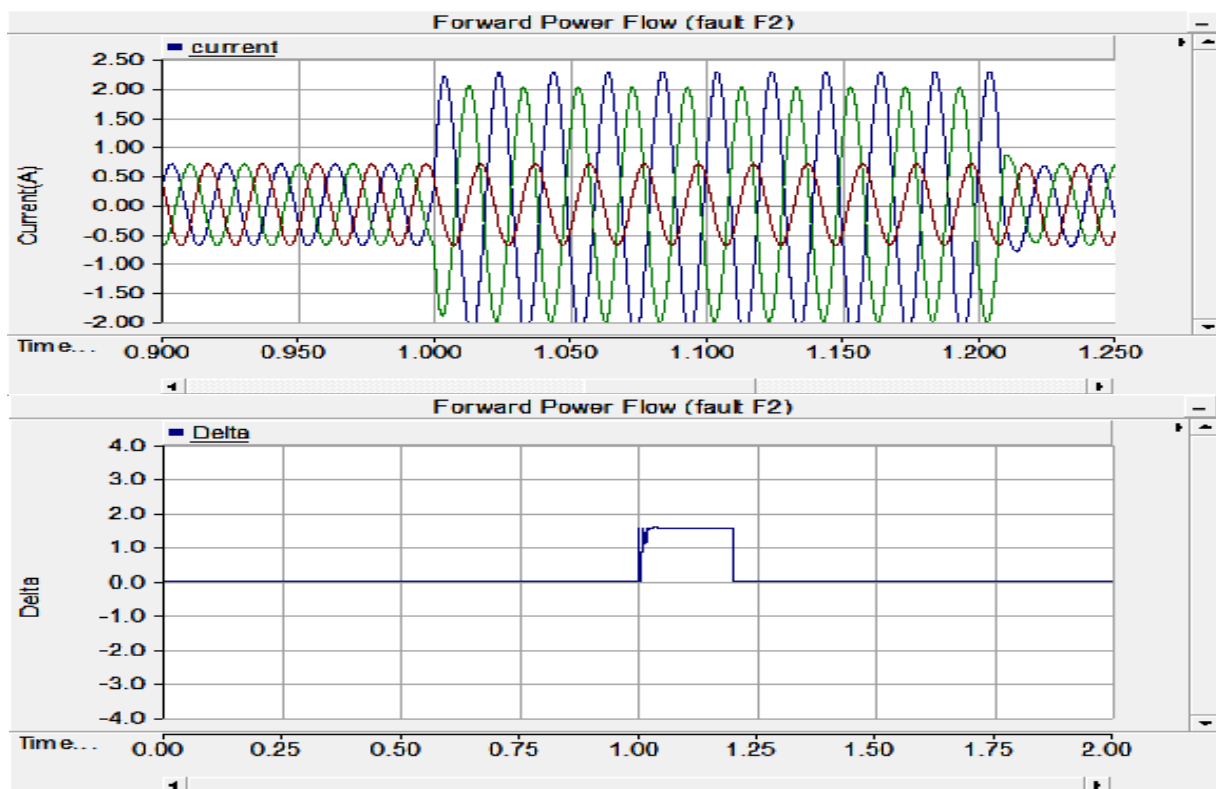


Fig. 3 Change in  $\theta_{\Delta}$  and current with forward power flow with L-L fault at F2.

# International Journal of Advanced Research in Electrical, Electronics and Instrumentation Engineering

(An ISO 3297: 2007 Certified Organization)

Vol. 4, Issue 10, October 2015

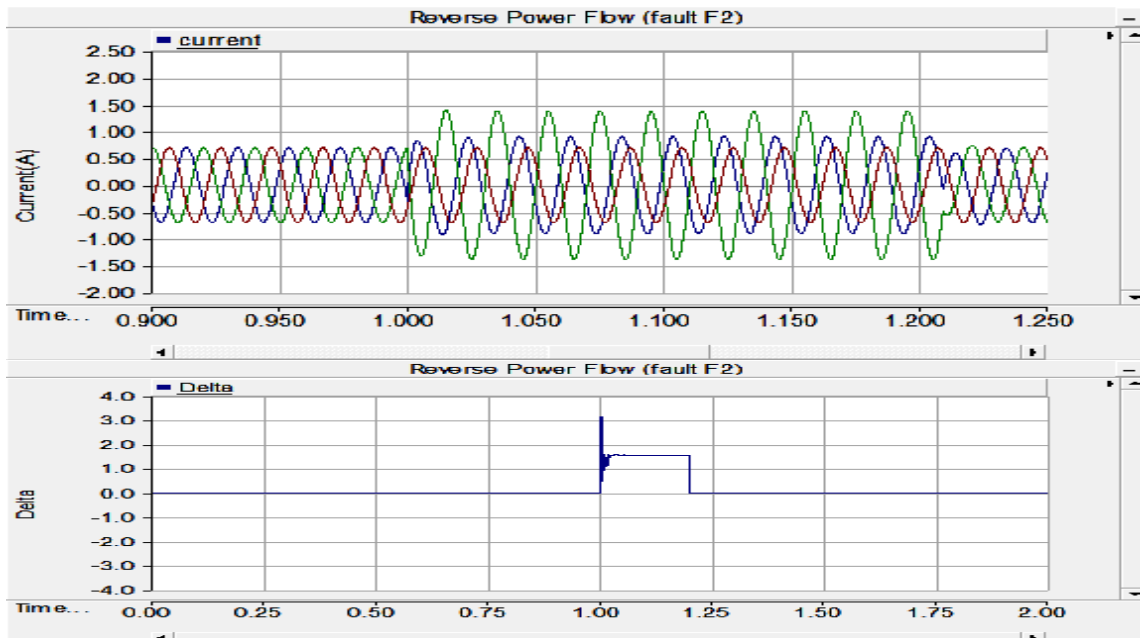


Fig. 4 Change in  $\Delta$  and current with reverse power flow with L-L fault at F2.

Fig 3 and fig 4, show the graphs of current and value of delta during forward and reverse power flow with fault at F2. In both cases the value of delta is obtained as positive irrespective of the direction of power flow which indicates that the fault has occurred in the forward direction of relay.

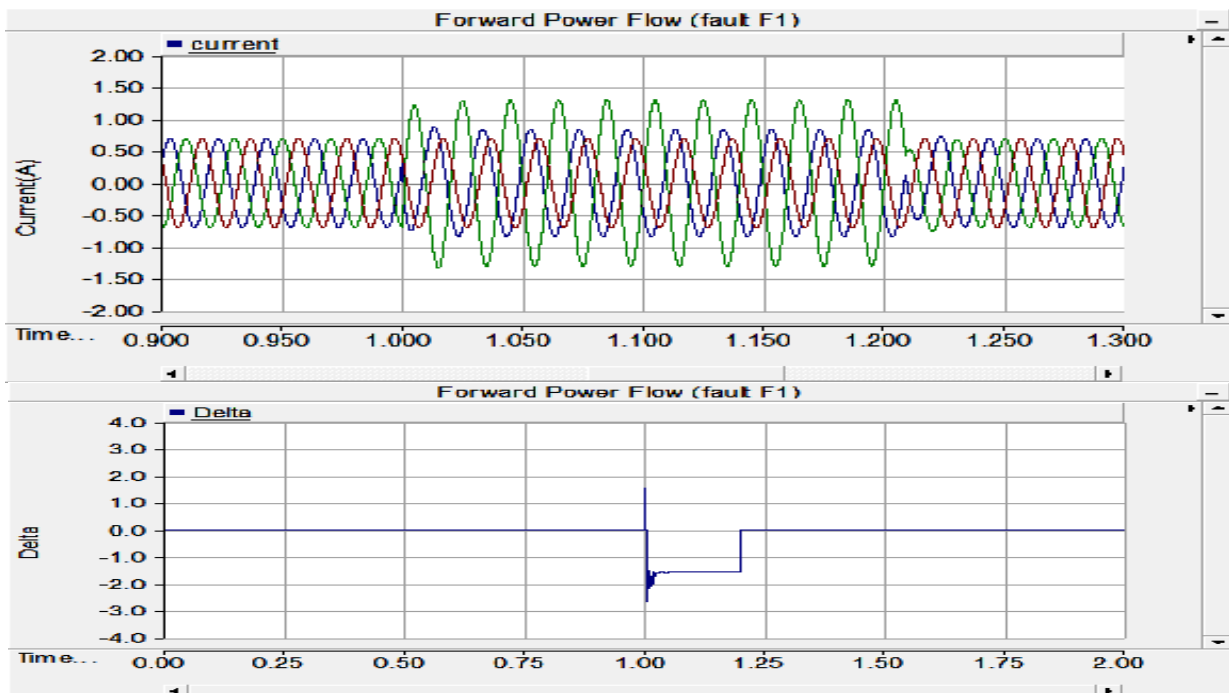


Fig. 5 Change in  $\Delta$  and current with forward power flow with L-L fault at F1.

## International Journal of Advanced Research in Electrical, Electronics and Instrumentation Engineering

(An ISO 3297: 2007 Certified Organization)

Vol. 4, Issue 10, October 2015

Fig 5 and fig 6, show the graphs of current and value of delta during forward and reverse power flow with fault at F1. In both cases the value of delta is obtained as negative irrespective of the direction of power flow which indicates that the fault has occurred in the reverse direction of relay.

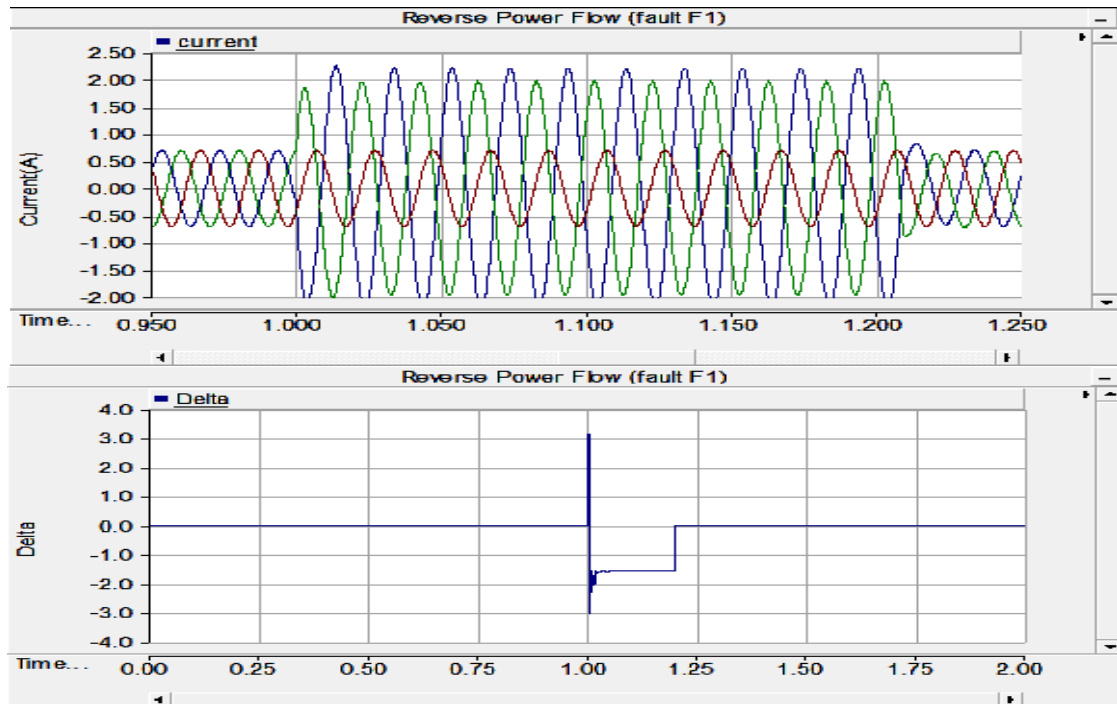


Fig. 6 Change  $\phi_{\Delta}$  and current with reverse power flow with L-L fault at F1.

The reliable operation of protective relays may be affected by the fault resistance. The above system is evaluated with forward and reverse power flow against various faults in both directions with the fault resistances ( $R_f$ ) between 1 to 10 $\Omega$ .

TABLE 3  
Effect of change in Fault Resistance.

POWER FLOW	FAULT TYPE	FAULT LOCATION	$R_f$ ( $\Omega$ )	$\phi_1$ (Rad)	$\phi_{ref}$ (Rad)	$\phi_{\Delta}$ (Rad)	FAULT DIRECTION
Forward	AB	F2	2	-0.448	1.122	+1.57	Forward
Forward	AB	F2	5	-0.157	1.413	+1.57	Forward
Forward	AB	F2	10	0.002	1.572	+1.57	Forward
Forward	AB	F1	2	2.592	1.022	-1.57	Reverse
Forward	AB	F1	5	2.94	1.37	-1.57	Reverse
Forward	AB	F1	10	3.249	1.679	-1.57	Reverse
Reverse	AB	F2	2	-0.576	0.994	+1.57	Forward
Reverse	AB	F2	5	-0.227	1.343	+1.57	Forward
Reverse	AB	F2	10	0.04	1.61	+1.57	Forward
Reverse	AB	F1	2	2.71	1.14	-1.57	Reverse
Reverse	AB	F1	5	3.0	1.43	-1.57	Reverse
Reverse	AB	F1	10	3.16	1.59	-1.57	Reverse



## International Journal of Advanced Research in Electrical, Electronics and Instrumentation Engineering

(An ISO 3297: 2007 Certified Organization)

Vol. 4, Issue 10, October 2015

The results obtained show that the phase angle of postfault current ( $\phi_1$ ) is affected by the change of fault resistance value. However as much as  $\phi_1$  changes, the phase angle of reference current ( $\phi_{ref}$ ) changes as well. Consequently, the phase angle,  $\phi_\Delta$  remains fixed.

The distance to fault location from source 1 is calculated for L-L fault for both forward and reverse power flow. Here the Fast Fourier Transform (FFT) technique is used for calculating the pre and postfault phasors.

TABLE 4  
Fault distance Calculation for L-L fault during Forward Power Flow.

POWER FLOW	PREFault CURRENT		POSTFAULT CURRENT				DISTANCE TO FAULT FROM SOURCE 1		FAULT DIRECTION
			POSITIVE SEQUENCE		NEGATIVE SEQUENCE				
	MAGNITUDE	ANGLE	MAGNITUDE	ANGLE	MAGNITUDE	ANGLE	ACTUAL	CALCULATED	
Forward	0.261166	-1.28425	0.582383	-1.60379	0.34418	-1.84468	4	8.8168	Reverse
Forward	0.261166	-1.28425	0.578514	-1.58226	0.337528	-1.81162	6	9.2772	Reverse
Forward	0.261166	-1.28425	0.574726	-1.56265	0.331345	-1.78112	8	10.023	Reverse
Forward	0.261166	-1.28425	0.446439	-1.55125	0.20623	-1.89219	10	10.6241	Reverse
Forward	0.261166	-1.28425	0.448338	-1.53253	0.20539	-1.85041	12	11.1283	Forward
Forward	0.261166	-1.28425	0.450397	-1.5149	0.204983	-1.8105	14	12.4296	Forward
Forward	0.261166	-1.28425	0.452588	-1.49846	0.205024	-1.77268	16	13.7329	Forward
Forward	0.261166	-1.28425	0.454943	-1.48327	0.205521	-1.73721	18	15.4752	Forward
Forward	0.261166	-1.28425	0.457487	-1.46938	0.20648	-1.70432	20	16.8947	Forward

Table 4 and 5 shows the results obtained for distance calculation for L-L fault during forward and reverse power flow respectively. For different length of fault from source 1, the actual value and calculated value of distance to fault are tabulated.

TABLE 5  
Fault distance Calculation for L-L fault during Reverse Power Flow.

POWER FLOW	PREFault CURRENT		POSTFAULT CURRENT				DISTANCE TO FAULT FROM SOURCE 1		FAULT DIRECTION
			POSITIVE SEQUENCE		NEGATIVE SEQUENCE				
	MAGNITUDE	ANGLE	MAGNITUDE	ANGLE	MAGNITUDE	ANGLE	ACTUAL	CALCULATED	
Reverse	0.260365	1.83927	0.189352	-2.75073	0.339935	-1.88802	4	8.8167	Reverse
Reverse	0.260365	1.83927	0.177529	-2.72969	0.335277	-1.85386	6	9.2771	Reverse
Reverse	0.260365	1.83927	0.166689	-2.71002	0.331023	-1.82226	8	10.023	Reverse
Reverse	0.260365	1.83927	0.137351	2.73065	0.204082	-1.85325	10	10.6242	Reverse
Reverse	0.260365	1.83927	0.128696	2.72244	0.204417	-1.81037	12	11.1284	Forward
Reverse	0.260365	1.83927	0.120332	2.71462	0.205182	-1.76935	14	12.4295	Forward
Reverse	0.260365	1.83927	0.112288	2.70743	0.206399	-1.73044	16	13.7329	Forward
Reverse	0.260365	1.83927	0.104561	2.70174	0.208086	-1.69386	18	15.4750	Forward
Reverse	0.260365	1.83927	0.0971501	2.69864	0.210255	-1.65987	20	16.8946	Forward



# International Journal of Advanced Research in Electrical, Electronics and Instrumentation Engineering

(An ISO 3297: 2007 Certified Organization)

Vol. 4, Issue 10, October 2015

By analyzing the results, we can conclude that the accuracy of distance calculation is less when the fault is situated near source 1 or source 2. When the distance from sources increases the accuracy of locating the fault also increases.

## VI.CONCLUSION

A new protection philosophy is developed for identifying the direction of fault based on postfault current. The phase angle difference between reference current and current in each phase were calculated and based on the sign of this value the direction of fault is estimated. Also an algorithm to calculate distance of fault location during L-L fault is included in this system. Here prefault and postfault phase current phasors are required to calculate the distance to fault point. The reliability of the system for various operation conditions such as change in power flow direction and change in fault resistance were analysed for different fault positions. Also accuracy of distance calculation for line to line fault were analyzed for fault at different lengths in both forward and reverse power flow conditions.

## REFERENCES

- [1] Mario Vignolo and Raul Zeballos, "Transmission Networks or Distributed Generation?", Power, Vol.1930, 1990.
- [2] Angel Fernández Sarabia, "Impact of distributed generation on distribution system", Aalborg, Denmark, June2011.
- [3] Murari Mohan, Saha Ratan, Das Pekka Verho and Damir Novosel, "Review of Fault Location Techniques for Distribution Systems", Power Systems and Communications Infrastructures for the future, Beijing, September2002.
- [4] Sadeh, J., Bashir, M., and Kamyab, E., "Effect of distributed generation capacity on the coordination of protection system of distribution network", Transmission and Distribution Conference and Exposition: Latin America (T&D-LA),IEEE/PES, pp.110-115, Nov.2010.
- [5] Ituzaro, F. A., Douglin, R. H., and Butler-Purry, K. L., "Zonal overcurrent protection for smart radial distribution systems with distributed generation", in Proc. IEEE Power Energy Soc. Innovative Smart Grid Technol., pp.1-6, Feb.2013.
- [6] Hashemi, S. M., Hagh, M. T., and Seyedi, H., "Transmission-line protection: A directional comparison scheme using the average of superimposed components", IEEE Trans. Power Del., vol.28, no.2, pp.955-964, Apr.2013.
- [7] Jafarian, P., and Sanaye-Pasand, M., "High-speed superimposed-based protection of series-compensated transmission lines", Proc. Inst. Eng.Technol. Gen. Transm. Distribution, vol.5, no.12, pp.1290-1300, 2011.
- [8] Pradhan, A. K., Routray, A., and Madhan, G. S., "Fault direction estimation in radial distribution system using phase change in sequence current", IEEE Trans. Power Del., vol.22, no.4, pp.2065-2071, Oct.2007.